

CSHL1 antibody

Product Information

Catalog No.:	FNab02015
Size:	100µg
Form:	liquid
Purification:	Immunogen affinity purified
Purity:	≥95% as determined by SDS-PAGE
Host:	Rabbit
Clonality:	polyclonal
Clone ID:	None
IsoType:	IgG
Storage:	PBS with 0.02% sodium azide and 50% glycerol pH 7.3, -20°C for 12 months(Avoid repeated freeze / thaw cycles.)

Background

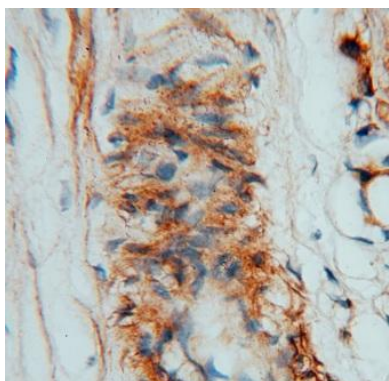
May be a novel gestational hormone required to compensate for absence of other members of the GH/CS cluster during gestation.

Immunogen information

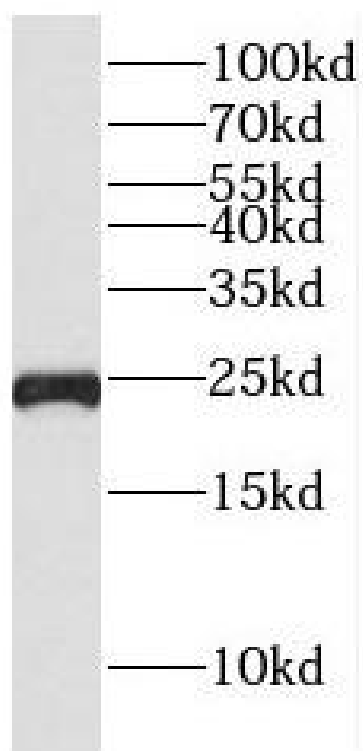
Immunogen:	chorionic somatomammotropin hormone-like 1
Synonyms:	Chorionic somatomammotropin hormone-like 1 (Chorionic somatomammotropin-like) Lactogen-like CSHL1 CSHP1 CSL
Observed MW:	23 kDa
Uniprot ID :	Q14406

Application

Reactivity:	Human
Tested Application:	ELISA, WB, IHC
Recommended dilution:	WB: 1:500-1:2000; IHC: 1:20-1:200
Image:	



Immunohistochemistry of paraffin-embedded human placenta using FNab02015(CSHL1 antibody) at dilution of 1:100



human placenta tissue were subjected to SDS PAGE followed by western blot with FNab02015(CSHL1 antibody) at dilution of 1:1000