

## CSF2RA antibody

### Product Information

Catalog No.:	FNab02013
Size:	100µg
Form:	liquid
Purification:	Immunogen affinity purified
Purity:	≥95% as determined by SDS-PAGE
Host:	Rabbit
Clonality:	polyclonal
Clone ID:	None
IsoType:	IgG
Storage:	PBS with 0.02% sodium azide and 50% glycerol pH 7.3, -20°C for 12 months(Avoid repeated freeze / thaw cycles.)

### Background

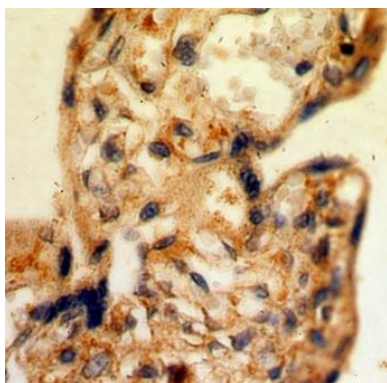
None

### Immunogen information

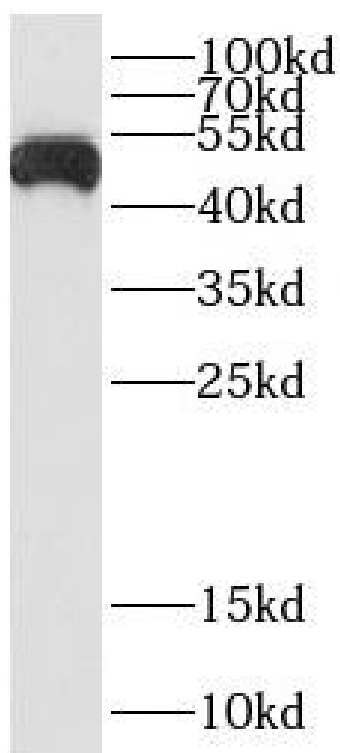
Immunogen:	colony stimulating factor 2 receptor, alpha, low-affinity(granulocyte-macrophage)
Synonyms:	Granulocyte-macrophage colony-stimulating factor receptor subunit alpha (GM-CSF-R-alpha, GMCSFR-alpha, GMR-alpha) CDw116 CSF2RA CSF2R CSF2RY
Observed MW:	48 kDa
Uniprot ID :	P15509

### Application

Reactivity:	Human
Tested Application:	ELISA, WB, IHC
Recommended dilution:	WB: 1:500-1:2000; IHC: 1:20-1:200
Image:	



Immunohistochemistry of paraffin-embedded human placenta using FNab02013(CSF2RA antibody) at dilution of 1:50



HepG2 cells were subjected to SDS PAGE followed by western blot with FNab02013(CSF2RA antibody) at dilution of 1:600