

CRY2 antibody

Product Information

Catalog No.:	FNab02008
Size:	100µg
Form:	liquid
Purification:	Immunogen affinity purified
Purity:	≥95% as determined by SDS-PAGE
Host:	Rabbit
Clonality:	polyclonal
Clone ID:	None
IsoType:	IgG
Storage:	PBS with 0.02% sodium azide and 50% glycerol pH 7.3, -20°C for 12 months(Avoid repeated freeze / thaw cycles.)

Background

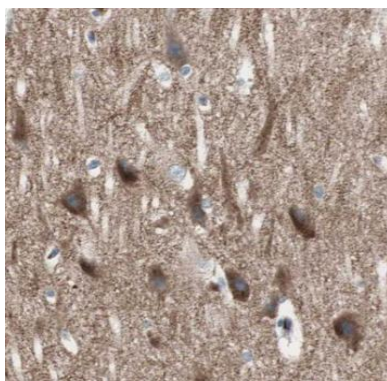
None

Immunogen information

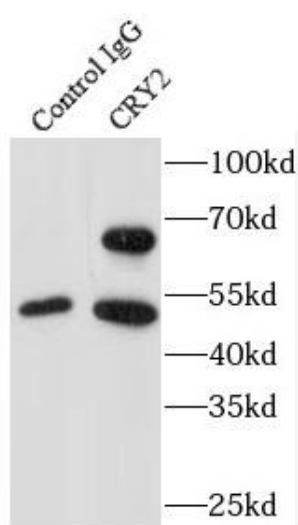
Immunogen:	cryptochrome 2(photolyase-like)
Synonyms:	Cryptochrome-2 CRY2 KIAA0658
Observed MW:	65 kDa
Uniprot ID :	Q49AN0

Application

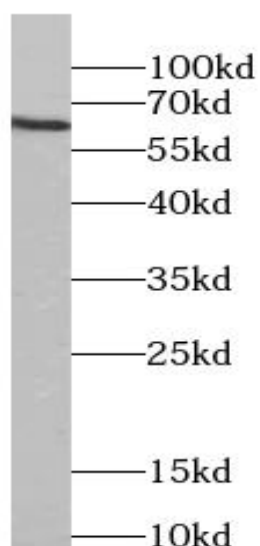
Reactivity:	Human, Mouse, Rat
Tested Application:	ELISA, WB, IHC, IF, IP
Recommended dilution:	WB: 1:500-1:1000; IP: 1:200-1:1000; IHC: 1:100-1:400; IF: 1:50-1:500
Image:	



Immunohistochemistry of paraffin-embedded mouse brain tissue slide using FNab02008 (Cryptochrome 2 antibody) at dilution of 1:200



IP Result of anti-Cryptochrome 2 (IP:FNab02008, 4ug; Detection:FNab02008 1:300) with mouse brain tissue lysate 5200ug.



Y79 cells were subjected to SDS PAGE followed by western blot with FNab02008 (Cryptochrome 2 antibody) at dilution of 1:500