

CRYBB2 antibody

Product Information

Catalog No.:	FNab02003
Size:	100µg
Form:	liquid
Purification:	Immunogen affinity purified
Purity:	≥95% as determined by SDS-PAGE
Host:	Rabbit
Clonality:	polyclonal
Clone ID:	None
IsoType:	IgG
Storage:	PBS with 0.02% sodium azide and 50% glycerol pH 7.3, -20°C for 12 months(Avoid repeated freeze / thaw cycles.)

Background

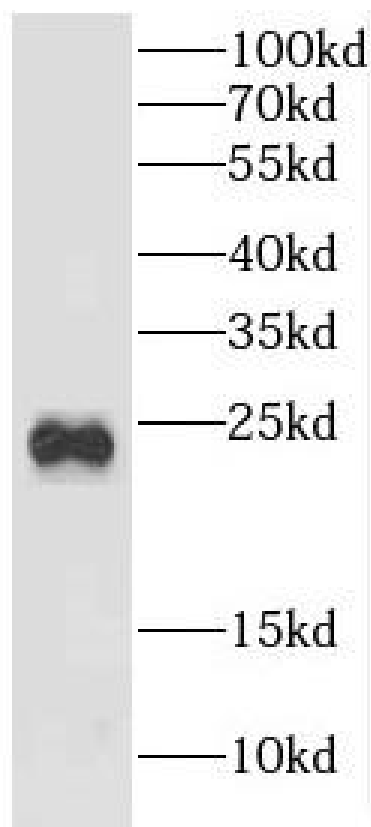
Crystallins are the dominant structural components of the vertebrate eye lens.

Immunogen information

Immunogen:	crystallin, beta B2
Synonyms:	Beta-crystallin B2 Beta-B2 crystallin Beta-crystallin Bp CRYBB2 CRYB2 CRYB2A
Observed MW:	24 kDa
Uniprot ID :	P43320

Application

Reactivity:	Human, Mouse, Rat
Tested Application:	ELISA, WB
Recommended dilution:	WB: 1:500-1:2000
Image:	



mouse brain tissue were subjected to SDS PAGE followed by western blot with FNab02003(CRYBB2 Antibody) at dilution of 1:300