

## CRYBA2 antibody

### Product Information

Catalog No.:	FNab02000
Size:	100µg
Form:	liquid
Purification:	Immunogen affinity purified
Purity:	≥95% as determined by SDS-PAGE
Host:	Rabbit
Clonality:	polyclonal
Clone ID:	None
IsoType:	IgG
Storage:	PBS with 0.02% sodium azide and 50% glycerol pH 7.3, -20°C for 12 months(Avoid repeated freeze / thaw cycles.)

### Background

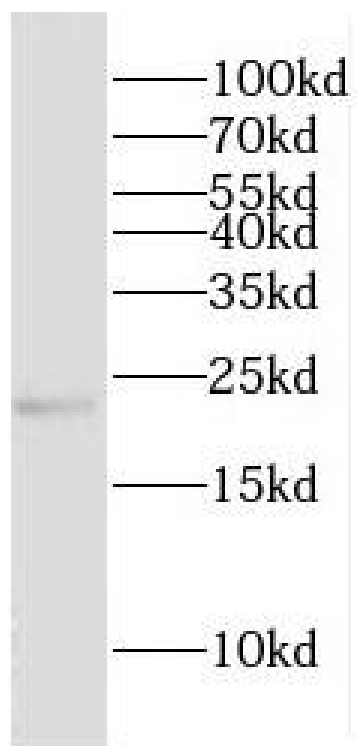
Crystallins are the dominant structural components of the vertebrate eye lens.

### Immunogen information

Immunogen:	crystallin, beta A2
Synonyms:	Beta-crystallin A2 Beta-A2 crystallin CRYBA2
Observed MW:	22 kDa
Uniprot ID :	P53672

### Application

Reactivity:	Human, Mouse, Rat
Tested Application:	ELISA, WB
Recommended dilution: WB:	1:500-1:2000
Image:	



mouse eye tissue were subjected to SDS PAGE followed by western blot with FNab02000( CRYBA2 Antibody) at dilution of 1:2000