

LUC7L3 antibody

Product Information

Catalog No.:	FNab01992
Size:	100µg
Form:	liquid
Purification:	Immunogen affinity purified
Purity:	≥95% as determined by SDS-PAGE
Host:	Rabbit
Clonality:	polyclonal
Clone ID:	None
IsoType:	IgG
Storage:	PBS with 0.02% sodium azide and 50% glycerol pH 7.3, -20°C for 12 months(Avoid repeated freeze / thaw cycles.)

Background

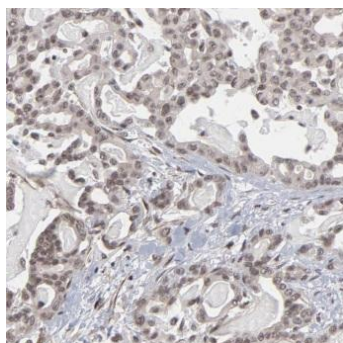
None

Immunogen information

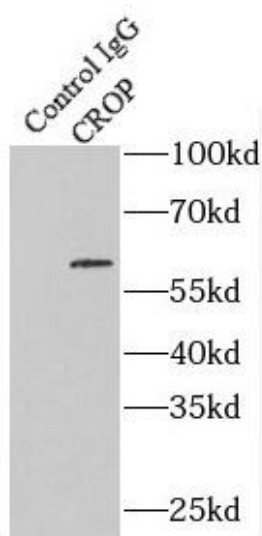
Immunogen:	cisplatin resistance-associated overexpressed protein
Synonyms:	Luc7-like protein 3 Cisplatin resistance-associated-overexpressed protein Luc7A Okadaic acid-inducible phosphoprotein OA48-18 cAMP regulatory element-associated protein 1 (CRE-associated protein 1, CREAP-1) LUC7L3 CREAP1 CROP O48
Observed MW:	55-58 kDa
Uniprot ID :	O95232

Application

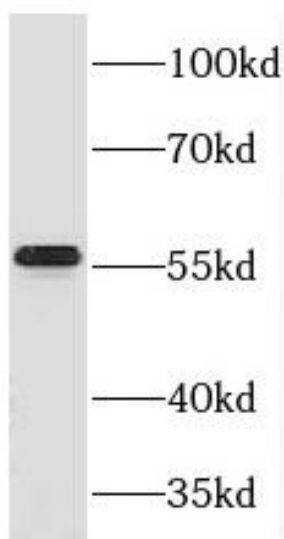
Reactivity:	Human, Mouse
Tested Application:	ELISA, WB, IHC, IP
Recommended dilution:	WB: 1:500-1:2000; IP: 1:200-1:1000; IHC: 1:20-1:200
Image:	



Immunohistochemistry of paraffin-embedded human pancreas cancer using FNaB01992(CROP antibody) at dilution of 1:50



IP Result of anti-CROP (IP:FNaB01992, 4ug; Detection:FNaB01992 1:500) with HepG2 cells lysate 3600ug.



Jurkat cells were subjected to SDS PAGE followed by western blot with FNaB01992(CROP antibody) at dilution of 1:600