

## XPO1 antibody

### Product Information

Catalog No.:	FNab01984
Size:	100µg
Form:	liquid
Purification:	Immunogen affinity purified
Purity:	≥95% as determined by SDS-PAGE
Host:	Rabbit
Clonality:	polyclonal
Clone ID:	None
IsoType:	IgG
Storage:	PBS with 0.02% sodium azide and 50% glycerol pH 7.3, -20°C for 12 months(Avoid repeated freeze / thaw cycles.)

### Background

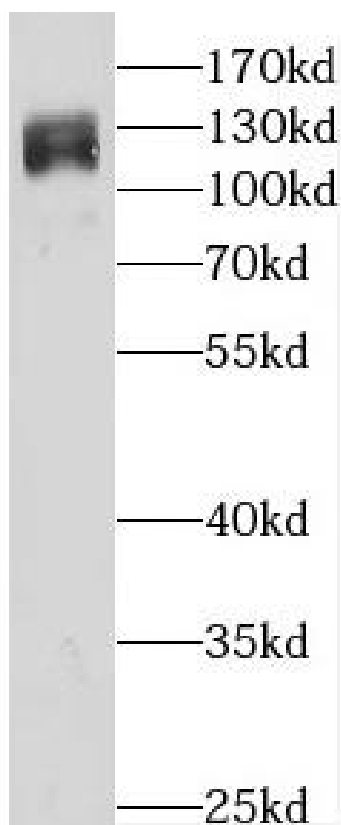
None

### Immunogen information

Immunogen:	exportin 1
Synonyms:	Exportin-1 (Exp1) Chromosome region maintenance 1 protein homolog XPO1 CRM1
Observed MW:	120 kDa
Uniprot ID :	O14980

### Application

Reactivity:	Human, Mouse
Tested Application:	ELISA, WB
Recommended dilution:	WB: 1:500-1:2000
Image:	



L02 cells were subjected to SDS PAGE followed by western blot with FNab01984(CRM1 antibody) at dilution of 1:1500