

CRH antibody

Product Information

Catalog No.:	FNab01973
Size:	100µg
Form:	liquid
Purification:	Immunogen affinity purified
Purity:	≥95% as determined by SDS-PAGE
Host:	Rabbit
Clonality:	polyclonal
Clone ID:	None
IsoType:	IgG
Storage:	PBS with 0.02% sodium azide and 50% glycerol pH 7.3, -20°C for 12 months(Avoid repeated freeze / thaw cycles.)

Background

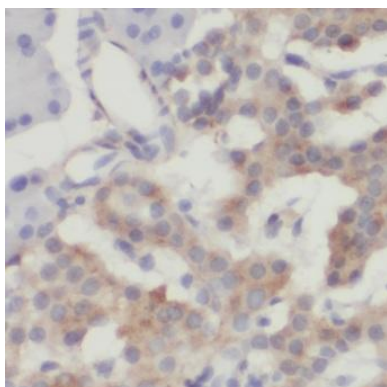
None

Immunogen information

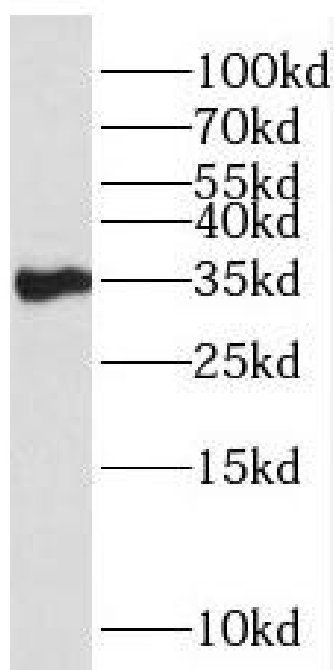
Immunogen:	corticotropin releasing hormone
Synonyms:	Corticoliberin Corticotropin-releasing factor (CRF) Corticotropin-releasing hormone CRH
Observed MW:	35 kDa
Uniprot ID :	P06850

Application

Reactivity:	Human, Mouse, Rat
Tested Application:	ELISA, WB, IHC
Recommended dilution:	WB: 1:500-1:2000; IHC: 1:20-1:200
Image:	



Immunohistochemistry of paraffin-embedded human pancreas tissue slide using FNab01973(CRH Antibody) at dilution of 1:200



human brain tissue were subjected to SDS PAGE followed by western blot with FNab01973(CRH antibody) at dilution of 1:400