

SS18L1 antibody

Product Information

Catalog No.:	FNab01971
Size:	100µg
Form:	liquid
Purification:	Immunogen affinity purified
Purity:	≥95% as determined by SDS-PAGE
Host:	Rabbit
Clonality:	polyclonal
Clone ID:	None
IsoType:	IgG
Storage:	PBS with 0.02% sodium azide and 50% glycerol pH 7.3, -20°C for 12 months(Avoid repeated freeze / thaw cycles.)

Background

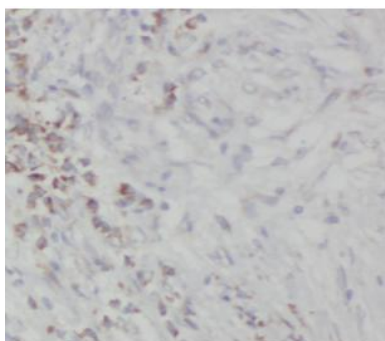
None

Immunogen information

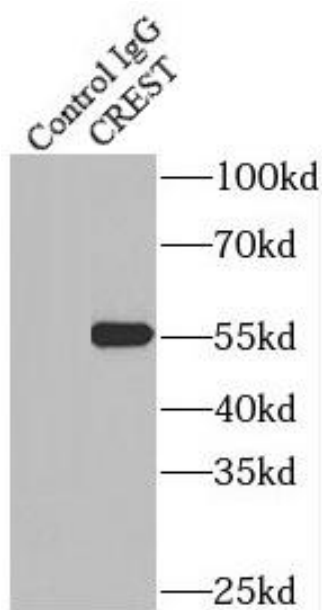
Immunogen:	synovial sarcoma translocation gene on chromosome 18-like 1
Synonyms:	Calcium-responsive transactivator SS18-like protein 1 SYT homolog 1 SS18L1 CREST KIAA0693
Observed MW:	55 kDa
Uniprot ID :	O75177

Application

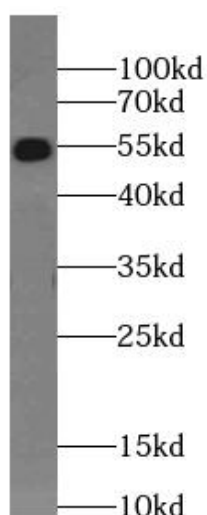
Reactivity:	Human, Mouse, Rat
Tested Application:	ELISA, IHC, IP, WB
Recommended dilution:	WB: 1:500-1:2000; IP: 1:150-1:600; IHC: 1:20-1:200; IF: 1:50-1:500
Image:	



Immunohistochemistry of paraffin-embedded human breast cancer using FNab01971(CREST antibody) at dilution of 1:50



IP result of anti-CREST(IP:FNab01971, 4ug; Detection:FNab01971 1:300) with HeLa cells lysate 3000 ug



K-562 cells were subjected to SDS PAGE followed by western blot with FNab01971(CREST Antibody) at dilution of 1:1000