

CREM antibody

Product Information

Catalog No.:	FNab01970
Size:	100µg
Form:	liquid
Purification:	Immunogen affinity purified
Purity:	≥95% as determined by SDS-PAGE
Host:	Rabbit
Clonality:	polyclonal
Clone ID:	None
IsoType:	IgG
Storage:	PBS with 0.02% sodium azide and 50% glycerol pH 7.3, -20°C for 12 months(Avoid repeated freeze / thaw cycles.)

Background

Transcriptional regulator that binds the cAMP response element(CRE), a sequence present in many viral and cellular promoters. Isoforms are either transcriptional activators or repressors. Plays a role in spermatogenesis and is involved in spermatid maturation(PubMed:10373550). Isoform 6: May play a role in the regulation of the circadian clock: acts as a transcriptional repressor of the core circadian component PER1 by directly binding to cAMP response elements in its promoter.

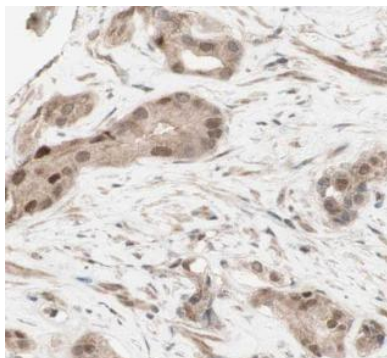
Immunogen information

Immunogen:	cAMP responsive element modulator
Synonyms:	cAMP-responsive element modulator Inducible cAMP early repressor (ICER) CREM
Observed MW:	36 kDa
Uniprot ID :	Q03060

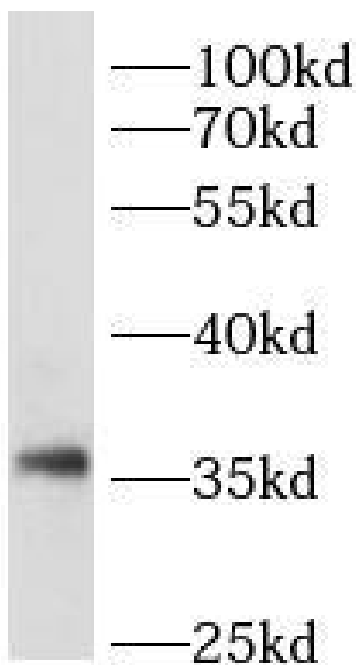
Application

Reactivity:	Human, Mouse, Rat
Tested Application:	ELISA, IHC, WB
Recommended dilution:	WB: 1:500 - 1:2000; IHC: 1:50 - 1:200

Image:



Immunohistochemistry of paraffin-embedded human prostate cancer using FNab01970(CREM antibody) at dilution of 1:50



rat testis tissue were subjected to SDS PAGE followed by western blot with FNab01970(CREM Antibody) at dilution of 1:1000