

## CREB3L2 antibody

### Product Information

Catalog No.:	FNab01964
Size:	100µg
Form:	liquid
Purification:	Immunogen affinity purified
Purity:	≥95% as determined by SDS-PAGE
Host:	Rabbit
Clonality:	polyclonal
Clone ID:	None
IsoType:	IgG
Storage:	PBS with 0.02% sodium azide and 50% glycerol pH 7.3, -20°C for 12 months(Avoid repeated freeze / thaw cycles.)

### Background

Transcription factor involved in unfolded protein response(UPR). In the absence of endoplasmic reticulum(ER) stress, inserted into ER membranes, with N-terminal DNA-binding and transcription activation domains oriented toward the cytosolic face of the membrane. In response to ER stress, transported to the Golgi, where it is cleaved in a site-specific manner by resident proteases S1P/MBTPS1 and S2P/MBTPS2. The released N-terminal cytosolic domain is translocated to the nucleus to effect transcription of specific target genes. Plays a critical role in chondrogenesis by activating the transcription of SEC23A, which promotes the transport and secretion of cartilage matrix proteins, and possibly that of ER biogenesis-related genes(By similarity). In a neuroblastoma cell line, protects cells from ER stress-induced death(PubMed:17178827). In vitro activates transcription of target genes via direct binding to the CRE site(PubMed:17178827).

### Immunogen information

Immunogen:	cAMP responsive element binding protein 3-like 2
Synonyms:	Cyclic AMP-responsive element-binding protein 3-like protein 2 (cAMP-responsive element-binding protein 3-like protein 2) BBF2 human homolog on chromosome 7 Processed cyclic AMP-responsive element-binding protein 3-like protein 2 CREB3L2 BBF2H7
Observed MW:	60-70 kDa
Uniprot ID :	Q70SY1

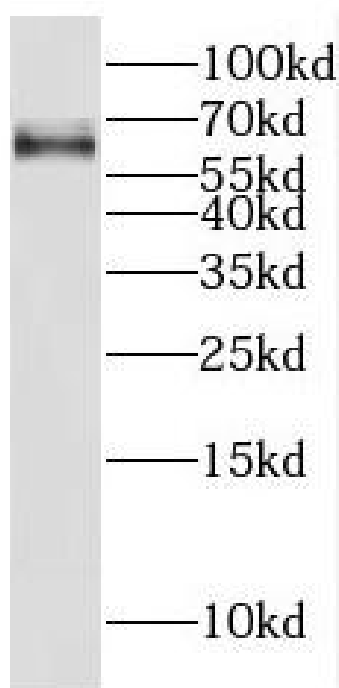
## Application

Reactivity: Human, Mouse, Rat

Tested Application: ELISA, WB

Recommended dilution: WB: 1:500-1:2000

Image:



HepG2 cells were subjected to SDS PAGE followed by western blot with FNab01964( CREB3L2 Antibody) at dilution of 1:600