

CREB3 antibody

Product Information

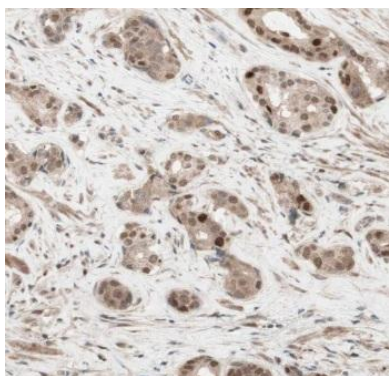
Catalog No.:	FNab01962
Size:	100µg
Form:	liquid
Purification:	Immunogen affinity purified
Purity:	≥95% as determined by SDS-PAGE
Host:	Rabbit
Clonality:	polyclonal
Clone ID:	None
IsoType:	IgG
Storage:	PBS with 0.02% sodium azide and 50% glycerol pH 7.3, -20°C for 12 months(Avoid repeated freeze / thaw cycles.)

Immunogen information

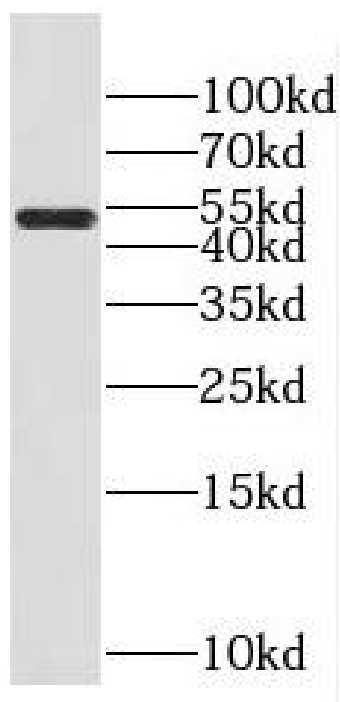
Immunogen:	cAMP responsive element binding protein 3
Synonyms:	Cyclic AMP-responsive element-binding protein 3 (CREB-3, cAMP-responsive element-binding protein 3) Leucine zipper protein Luman Transcription factor LZIP-alpha Processed cyclic AMP-responsive element-binding protein 3 (N-terminal Luman, Transcriptionally active form) CREB3 LZIP
Observed MW:	40-64 kDa
Uniprot ID :	O43889

Application

Reactivity:	Human
Tested Application:	ELISA, WB, IHC, IP
Recommended dilution:	WB: 1:500-1:2000; IP: 1:200-1:1000; IHC: 1:20-1:200
Image:	



Immunohistochemistry of paraffin-embedded human prostate cancer using FNab01962(CREB3 antibody) at dilution of 1:100



PC-3 cells were subjected to SDS PAGE followed by western blot with FNab01962(CREB3 antibody) at dilution of 1:300