

## CREB1 antibody

### Product Information

Catalog No.:	FNab01961
Size:	100µg
Form:	liquid
Purification:	Immunogen affinity purified
Purity:	≥95% as determined by SDS-PAGE
Host:	Rabbit
Clonality:	polyclonal
Clone ID:	None
IsoType:	IgG
Storage:	PBS with 0.02% sodium azide and 50% glycerol pH 7.3, -20°C for 12 months(Avoid repeated freeze / thaw cycles.)

### Background

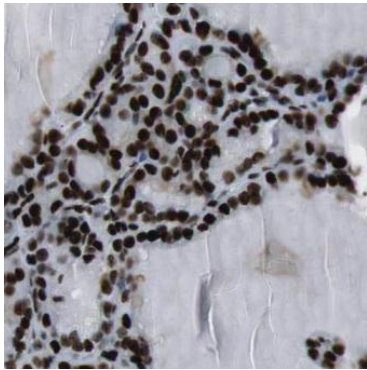
Phosphorylation-dependent transcription factor that stimulates transcription upon binding to the DNA cAMP response element(CRE), a sequence present in many viral and cellular promoters. Transcription activation is enhanced by the TORC coactivators which act independently of Ser-133 phosphorylation. Involved in different cellular processes including the synchronization of circadian rhythmicity and the differentiation of adipose cells.

### Immunogen information

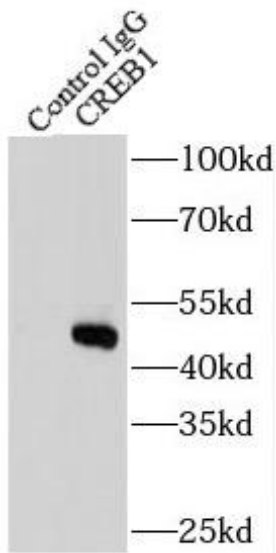
Immunogen:	cAMP responsive element binding protein 1
Synonyms:	Cyclic AMP-responsive element-binding protein 1 (CREB-1, cAMP-responsive element-binding protein 1) CREB1
Observed MW:	43-46 kDa
Uniprot ID :	P16220

### Application

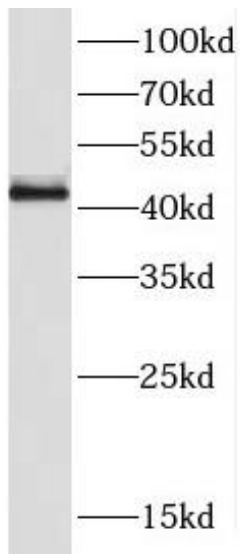
Reactivity:	Human, Mouse, Rat, Monkey
Tested Application:	ELISA, IP, WB, IF, IHC, FC
Recommended dilution:	WB: 1:500-1:3000; IP: 1:500-1:1000; IHC: 1:20-1:200; IF: 1:10-1:100
Image:	



Immunohistochemistry of paraffin-embedded human thyroid tissue slide using FNab01961(CREB1 Antibody) at dilution of 1:50



IP Result of anti-CREB1 (IP:FNab01961, 3ug; Detection:FNab01961 1:600) with HEK-293 cells lysate 2000ug.



HeLa cells were subjected to SDS PAGE followed by western blot with FNab01961(CREB1 antibody) at dilution of 1:1500