

CKB-Specific antibody

Product Information

Catalog No.:	FNab01960
Size:	100µg
Form:	liquid
Purification:	Immunogen affinity purified
Purity:	≥95% as determined by SDS-PAGE
Host:	Rabbit
Clonality:	polyclonal
Clone ID:	None
IsoType:	IgG
Storage:	PBS with 0.02% sodium azide and 50% glycerol pH 7.3, -20°C for 12 months(Avoid repeated freeze / thaw cycles.)

Background

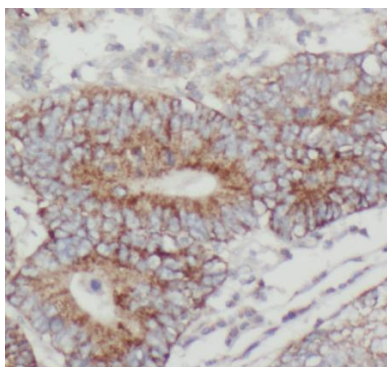
None

Immunogen information

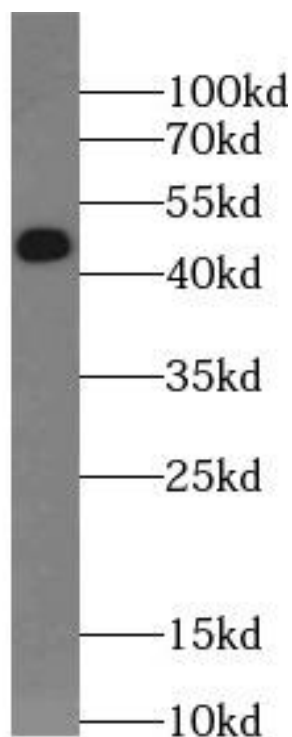
Immunogen:	creatine kinase, brain
Synonyms:	Creatine kinase B-type Brain creatine kinase (B-CK) Creatine kinase B chain Creatine phosphokinase B-type (CPK-B) CKB CKBB
Observed MW:	43 kDa
Uniprot ID :	P12277

Application

Reactivity:	Human, Mouse, Rat
Tested Application:	ELISA, WB, IHC
Recommended dilution:	WB: 1:500-1:2000; IHC: 1:20-1:200
Image:	



Immunohistochemistry of paraffin-embedded human colon cancer using FNab01960(CKB antibody) at dilution of 1:100



human brain tissue were subjected to SDS PAGE followed by western blot with FNab01960(Creatine kinase B type-Specific antibody) at dilution of 1:500