

## CPVL antibody

### Product Information

Catalog No.:	FNab01947
Size:	100µg
Form:	liquid
Purification:	Immunogen affinity purified
Purity:	≥95% as determined by SDS-PAGE
Host:	Rabbit
Clonality:	polyclonal
Clone ID:	None
IsoType:	IgG
Storage:	PBS with 0.02% sodium azide and 50% glycerol pH 7.3, -20°C for 12 months(Avoid repeated freeze / thaw cycles.)

### Background

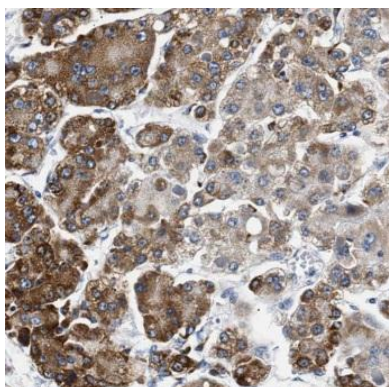
May be involved in the digestion of phagocytosed particles in the lysosome, participation in an inflammatory protease cascade, and trimming of peptides for antigen presentation.

### Immunogen information

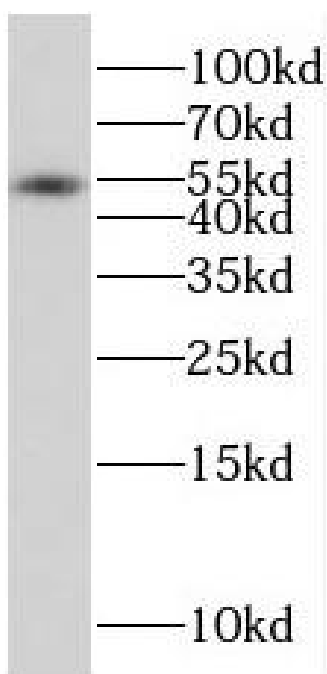
Immunogen:	carboxypeptidase, vitellogenic-like
Synonyms:	Probable serine carboxypeptidase CPVL Carboxypeptidase, vitellogenic-like Vitellogenic carboxypeptidase-like protein (VCP-like protein, hVLP) CPVL VLP
Observed MW:	54 kDa
Uniprot ID :	Q9H3G5

### Application

Reactivity:	Human, Mouse, Rat
Tested Application:	ELISA, WB, IHC
Recommended dilution:	WB: 1:500-1:2000; IHC: 1:20-1:200
Image:	



Immunohistochemistry of paraffin-embedded human liver cancer using FNab01947(CPVL antibody) at dilution of 1:200



human liver tissue were subjected to SDS PAGE followed by western blot with FNab01947(CPVL antibody) at dilution of 1:500