

## CPT1A antibody

### Product Information

Catalog No.:	FNab01942
Size:	100µg
Form:	liquid
Purification:	Immunogen affinity purified
Purity:	≥95% as determined by SDS-PAGE
Host:	Rabbit
Clonality:	polyclonal
Clone ID:	None
IsoType:	IgG
Storage:	PBS with 0.02% sodium azide and 50% glycerol pH 7.3, -20°C for 12 months(Avoid repeated freeze / thaw cycles.)

### Background

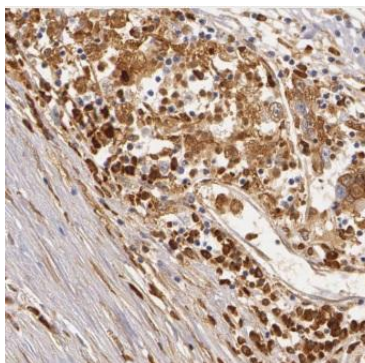
Catalyzes the transfer of the acyl group of long-chain fatty acid-CoA conjugates onto carnitine, an essential step for the mitochondrial uptake of long-chain fatty acids and their subsequent beta-oxidation in the mitochondrion. Plays an important role in triglyceride metabolism.

### Immunogen information

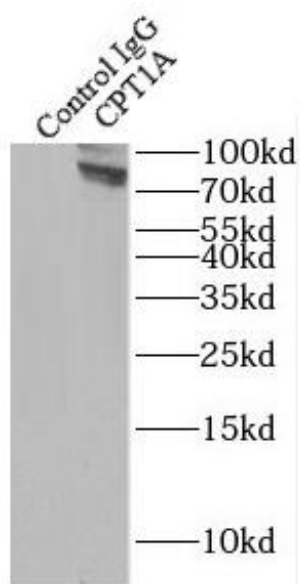
Immunogen:	carnitine palmitoyltransferase 1A(liver)
Synonyms:	Carnitine O-palmitoyltransferase 1, liver isoform (CPT1-L) Carnitine O-palmitoyltransferase I, liver isoform (CPT I, CPTI-L) Carnitine palmitoyltransferase 1A CPT1A CPT1
Observed MW:	86 kDa
Uniprot ID :	P50416

### Application

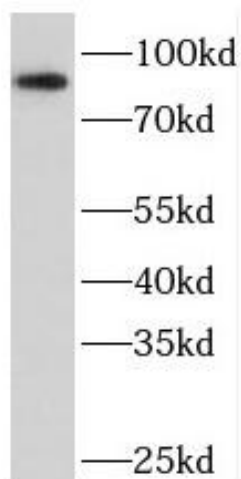
Reactivity:	Human, Mouse, Rat
Tested Application:	ELISA, WB, IF, IP, IHC, FC
Recommended dilution:	WB: 1:500-1:2000; IP: 1:200-1:1000; IHC: 1:20-1:200; IF: 1:20-1:200
Image:	



Immunohistochemistry of paraffin-embedded human liver cancer using FNab01942(CPT1A antibody) at dilution of 1:100



IP result of anti-CPT1A(IP:FNab01942, 4ug; Detection:FNab01942 1:1000) with HepG2 cells lysate 3000 ug



HepG2 cells were subjected to SDS PAGE followed by western blot with FNab01942(CPT1A antibody) at dilution of 1:1000