

CPSF2 antibody

Product Information

Catalog No.:	FNab01937
Size:	100µg
Form:	liquid
Purification:	Immunogen affinity purified
Purity:	≥95% as determined by SDS-PAGE
Host:	Rabbit
Clonality:	polyclonal
Clone ID:	None
IsoType:	IgG
Storage:	PBS with 0.02% sodium azide and 50% glycerol pH 7.3, -20°C for 12 months(Avoid repeated freeze / thaw cycles.)

Background

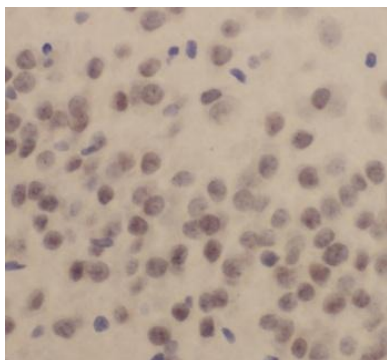
Component of the cleavage and polyadenylation specificity factor(CPSF) complex that play a key role in pre-mRNA 3'-end formation, recognizing the AAUAAA signal sequence and interacting with poly(A) polymerase and other factors to bring about cleavage and poly(A) addition. Involved in the histone 3' end pre-mRNA processing.

Immunogen information

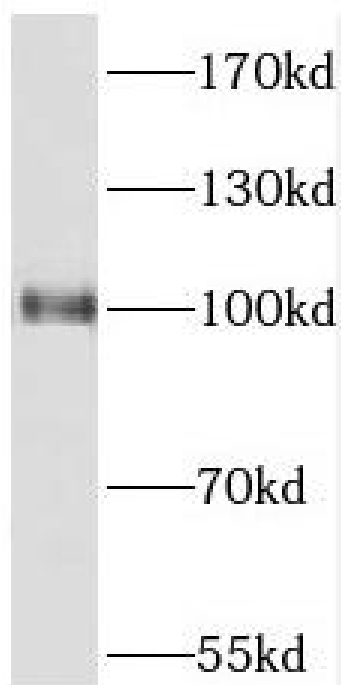
Immunogen:	cleavage and polyadenylation specific factor 2, 100kDa
Synonyms:	Cleavage and polyadenylation specificity factor subunit 2 Cleavage and polyadenylation specificity factor 100 kDa subunit (CPSF 100 kDa subunit) CPSF2 CPSF100 KIAA1367
Observed MW:	100 kDa
Uniprot ID :	Q9P2I0

Application

Reactivity:	Human, Mouse, Rat
Tested Application:	ELISA, WB, IHC, IF
Recommended dilution:	WB: 1:500-1:2000; IHC: 1:20-1:200; IF: 1:20-1:200
Image:	



Immunohistochemistry of paraffin-embedded human brain using FNab01937(CPSF2 antibody) at dilution of 1:100



HeLa cells were subjected to SDS PAGE followed by western blot with FNab01937(CPSF2 antibody) at dilution of 1:800