

## CPNE8 antibody

### Product Information

Catalog No.:	FNab01931
Size:	100µg
Form:	liquid
Purification:	Immunogen affinity purified
Purity:	≥95% as determined by SDS-PAGE
Host:	Rabbit
Clonality:	polyclonal
Clone ID:	None
IsoType:	IgG
Storage:	PBS with 0.02% sodium azide and 50% glycerol pH 7.3, -20°C for 12 months(Avoid repeated freeze / thaw cycles.)

### Background

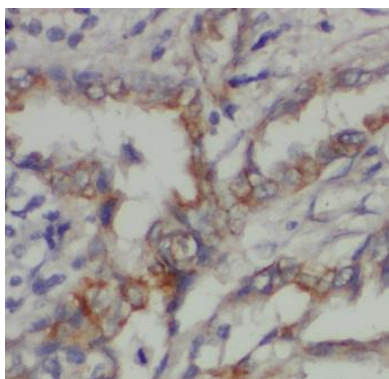
Probable calcium-dependent phospholipid-binding protein that may play a role in calcium-mediated intracellular processes.

### Immunogen information

Immunogen:	copine VIII
Synonyms:	Copine-8 Copine VIII CPNE8
Observed MW:	63 kDa
Uniprot ID :	Q86YQ8

### Application

Reactivity:	Human, Mouse, Rat
Tested Application:	ELISA, IHC
Recommended dilution:	IHC: 1:20-1:200
Image:	



Immunohistochemistry of paraffin-embedded human lung using FNab01931(CPNE8 antibody) at dilution of 1:50