

CPN1 antibody

Product Information

Catalog No.:	FNab01925
Size:	100µg
Form:	liquid
Purification:	Immunogen affinity purified
Purity:	≥95% as determined by SDS-PAGE
Host:	Rabbit
Clonality:	polyclonal
Clone ID:	None
IsoType:	IgG
Storage:	PBS with 0.02% sodium azide and 50% glycerol pH 7.3, -20°C for 12 months(Avoid repeated freeze / thaw cycles.)

Background

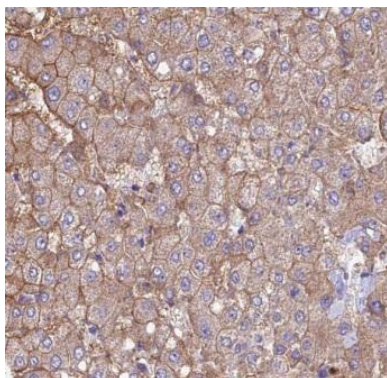
Protects the body from potent vasoactive and inflammatory peptides containing C-terminal Arg or Lys(such as kinins or anaphylatoxins) which are released into the circulation.

Immunogen information

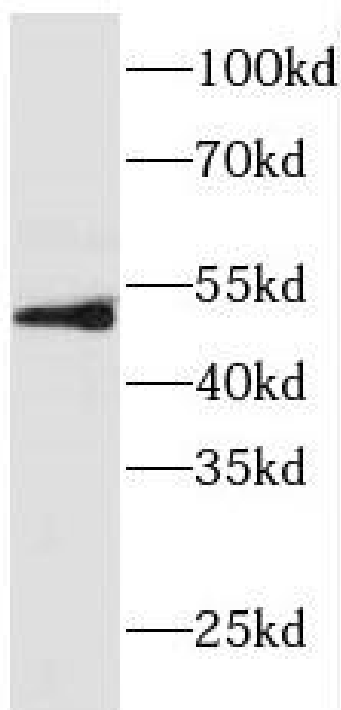
Immunogen:	carboxypeptidase N, polypeptide 1
Synonyms:	Carboxypeptidase N catalytic chain (CPN) Anaphylatoxin inactivator Arginine carboxypeptidase Carboxypeptidase N polypeptide 1 Carboxypeptidase N small subunit Kininase-1 Lysine carboxypeptidase Plasma carboxypeptidase B Serum carboxypeptidase N (SCPN) CPN1 ACBP
Observed MW:	50 kDa
Uniprot ID :	P15169

Application

Reactivity:	Human, Mouse, Rat
Tested Application:	ELISA, WB, IHC, FC, IF
Recommended dilution:	WB: 1:500-1:2000; IHC: 1:20-1:200; IF: 1:20-1:200
Image:	



Immunohistochemistry of paraffin-embedded human liver cancer using FNab01925(CPN1 antibody) at dilution of 1:100



Raji cells were subjected to SDS PAGE followed by western blot with FNab01925(CPN1 antibody) at dilution of 1:300