

COTL1 antibody

Product Information

Catalog No.:	FNab01888
Size:	100µg
Form:	liquid
Purification:	Immunogen affinity purified
Purity:	≥95% as determined by SDS-PAGE
Host:	Rabbit
Clonality:	polyclonal
Clone ID:	None
IsoType:	IgG
Storage:	PBS with 0.02% sodium azide and 50% glycerol pH 7.3, -20°C for 12 months (Avoid repeated freeze / thaw cycles.)

Background

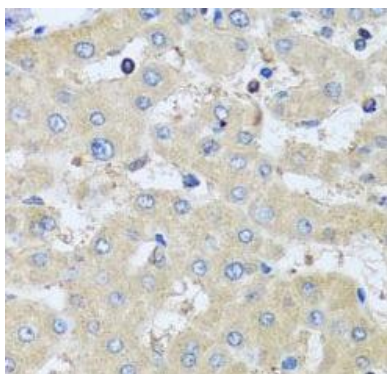
This gene encodes one of the numerous actin-binding proteins which regulate the actin cytoskeleton. This protein binds F-actin, and also interacts with 5-lipoxygenase, which is the first committed enzyme in leukotriene biosynthesis. Although this gene has been reported to map to chromosome 17 in the Smith-Magenis syndrome region, the best alignments for this gene are to chromosome 16. The Smith-Magenis syndrome region is the site of two related pseudogenes.

Immunogen information

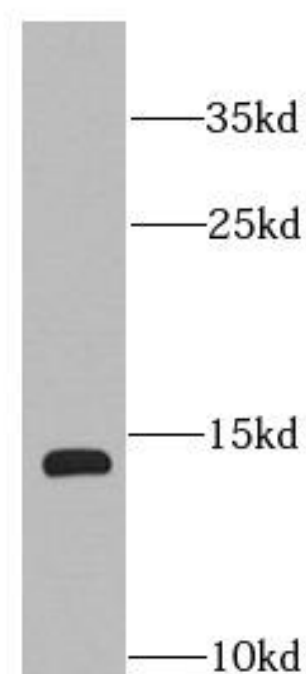
Immunogen:	coactosin-like 1
Synonyms:	Coactosin-like protein COTL1 CLP
Observed MW:	14 kDa
Uniprot ID :	Q14019

Application

Reactivity:	Human, Mouse, Rat
Tested Application:	ELISA, WB, IHC
Recommended dilution:	WB: 1:500 - 1:2000; IHC: 1:50 - 1:100
Image:	



Immunohistochemistry of paraffin-embedded human liver injury using FNab01888(COTL1 antibody) at dilution of 1:50



mouse brain tissue were subjected to SDS PAGE followed by western blot with FNab01888(COTL1 antibody) at dilution of 1:1000