

## CORO1A antibody

### Product Information

Catalog No.:	FNab01882
Size:	100µg
Form:	liquid
Purification:	Immunogen affinity purified
Purity:	≥95% as determined by SDS-PAGE
Host:	Rabbit
Clonality:	polyclonal
Clone ID:	None
IsoType:	IgG
Storage:	PBS with 0.02% sodium azide and 50% glycerol pH 7.3, -20°C for 12 months(Avoid repeated freeze / thaw cycles.)

### Background

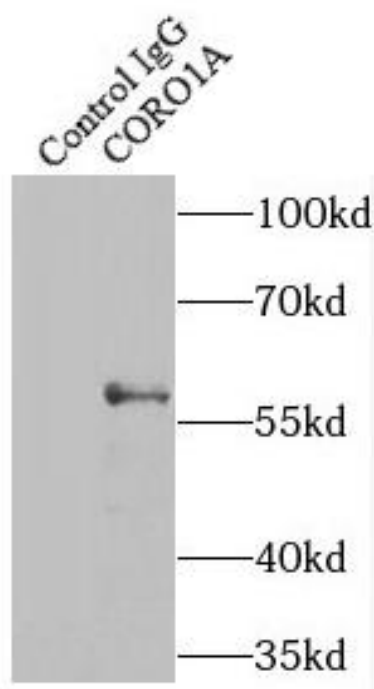
May be a crucial component of the cytoskeleton of highly motile cells, functioning both in the invagination of large pieces of plasma membrane, as well as in forming protrusions of the plasma membrane involved in cell locomotion. In mycobacteria-infected cells, its retention on the phagosomal membrane prevents fusion between phagosomes and lysosomes.

### Immunogen information

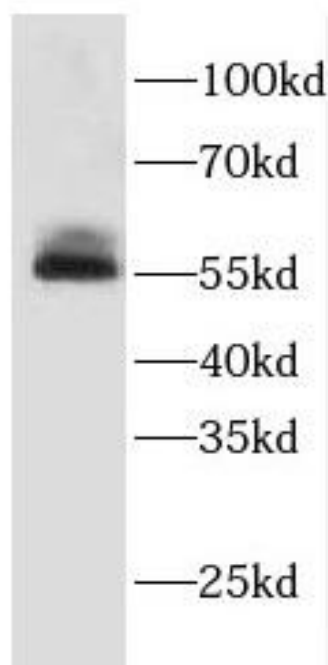
Immunogen:	coronin, actin binding protein, 1A
Synonyms:	Coronin-1A Coronin-like protein A (Clipin-A) Coronin-like protein p57 Tryptophan aspartate-containing coat protein (TACO) CORO1A CORO1
Observed MW:	57 kDa
Uniprot ID :	P31146

### Application

Reactivity:	Human, Mouse, Rat
Tested Application:	ELISA, WB, IP
Recommended dilution:	WB: 1:500-1:2000; IP: 1:200-1:2000
Image:	



IP Result of anti-CORO1A (IP:FNab01882, 4ug;  
Detection:FNab01882 1:1000) with mouse spleen  
tissue lysate 4800ug.



rat brain tissue were subjected to SDS PAGE  
followed by western blot with  
FNab01882(CORO1A antibody) at dilution of  
1:500