

## COPG1 antibody

### Product Information

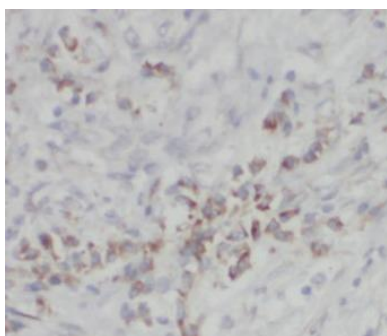
Catalog No.:	FNab01866
Size:	100µg
Form:	liquid
Purification:	Immunogen affinity purified
Purity:	≥95% as determined by SDS-PAGE
Host:	Rabbit
Clonality:	polyclonal
IsoType:	IgG
Storage:	PBS with 0.02% sodium azide and 50% glycerol pH 7.3, -20°C for 12 months(Avoid repeated freeze / thaw cycles.)

### Immunogen information

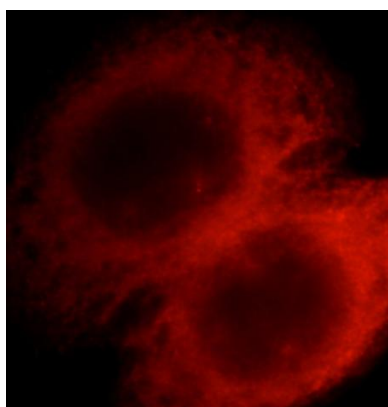
Immunogen:	coatomer protein complex, subunit gamma
Synonyms:	Coatomer subunit gamma-1 Gamma-1-coat protein (Gamma-1-COP) COPG1 COPG
Observed MW:	98 kDa
Uniprot ID :	Q9Y678

### Application

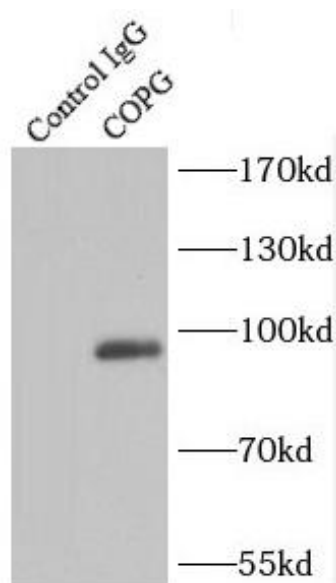
Reactivity:	Human, Mouse, Rat
Tested Application:	ELISA, WB, IHC, IF, IP
Recommended dilution:	WB: 1:1000-1:5000; IP: 1:1000-1:4000; IHC: 1:20-1:200; IF: 1:10-1:100
Image:	



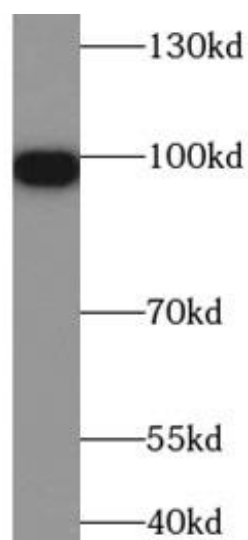
Immunohistochemistry of paraffin-embedded human breast cancer using FNab01866(COPG antibody) at dilution of 1:50



Immunofluorescent analysis of HeLa cells, using FNab01866(COPG antibody) at 1:25 dilution and Rhodamine-labeled goat anti-rabbit IgG (red).



IP Result of anti-COPG (IP:FNab01870, 4ug; Detection:FNab01870 1:2000) with K-562 cells lysate 3600ug.



K-562 cells were subjected to SDS PAGE followed by western blot with FNab01866(COPG antibody) at dilution of 1:500