

## COMT antibody

### Product Information

Catalog No.:	FNab01856
Size:	100µg
Form:	liquid
Purification:	Immunogen affinity purified
Purity:	≥95% as determined by SDS-PAGE
Host:	Rabbit
Clonality:	polyclonal
Clone ID:	None
IsoType:	IgG
Storage:	PBS with 0.02% sodium azide and 50% glycerol pH 7.3, -20°C for 12 months (Avoid repeated freeze / thaw cycles.)

### Background

Catechol-O-methyltransferase catalyzes the transfer of a methyl group from S-adenosylmethionine to catecholamines, including the neurotransmitters dopamine, epinephrine, and norepinephrine. This O-methylation results in one of the major degradative pathways of the catecholamine transmitters. In addition to its role in the metabolism of endogenous substances, COMT is important in the metabolism of catechol drugs used in the treatment of hypertension, asthma, and Parkinson disease. COMT is found in two forms in tissues, a soluble form (S-COMT) and a membrane-bound form (MB-COMT). The differences between S-COMT and MB-COMT reside within the N-termini. Several transcript variants are formed through the use of alternative translation initiation sites and promoters.

### Immunogen information

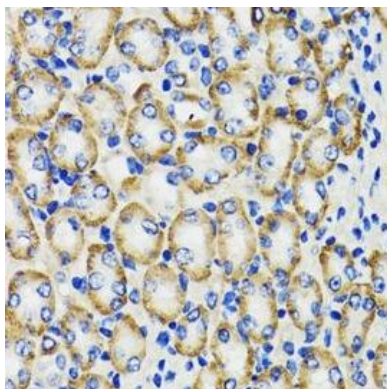
Immunogen:	catechol-O-methyltransferase
Synonyms:	Catechol O-methyltransferase COMT
Observed MW:	28 kDa, 32 kDa
Uniprot ID :	P21964

### Application

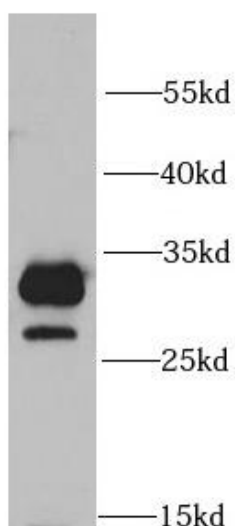
Reactivity:	Human, Mouse, Rat
Tested Application:	ELISA, IHC, IF, WB

Recommended dilution: WB: 1:500 - 1:2000; IHC: 1:50 - 1:200; IF: 1:50 - 1:200

Image:



Immunohistochemistry of paraffin-embedded rat kidney using FNab01856(COMT antibody) at dilution of 1:100



mouse liver tissue were subjected to SDS PAGE followed by western blot with FNab01856( COMT Antibody) at dilution of 1:1000