

CFL1 antibody

Product Information

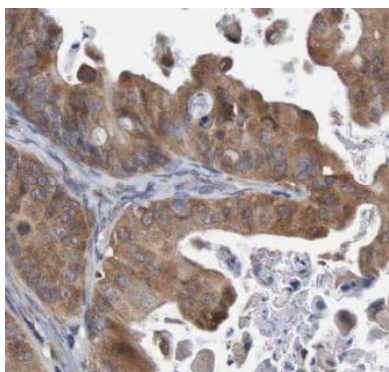
Catalog No.:	FNab01826
Size:	100µg
Form:	liquid
Purification:	Protein A+G purification
Purity:	≥95% as determined by SDS-PAGE
Host:	Mouse
Clonality:	monoclonal
Clone ID:	0F2
IsoType:	IgG1
Storage:	PBS with 0.02% sodium azide and 50% glycerol pH 7.3, -20°C for 12 months(Avoid repeated freeze / thaw cycles.)

Immunogen information

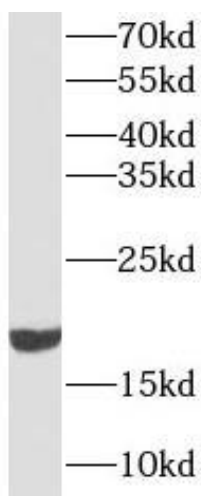
Immunogen:	cofilin 1(non-muscle)
Synonyms:	Cofilin-1 18 kDa phosphoprotein (p18) Cofilin, non-muscle isoform CFL1 CFL
Observed MW:	18 kDa
Uniprot ID :	P23528

Application

Reactivity:	Human, Mouse, Rat
Tested Application:	ELISA, WB, IHC, IF
Recommended dilution:	WB: 1:1000-1:5000; IHC: 1:20-1:200; IF: 1:20-1:200
Image:	



Immunohistochemistry of paraffin-embedded human ovary cancer using FNab01826(Cofilin antibody) at dilution of 1:50



HeLa cells were subjected to SDS PAGE followed by western blot with FNab01826(Cofilin Antibody) at dilution of 1:2000