

CFL1 antibody

Product Information

Catalog No.:	FNab01825
Size:	100µg
Form:	liquid
Purification:	Immunogen affinity purified
Purity:	≥95% as determined by SDS-PAGE
Host:	Rabbit
Clonality:	polyclonal
Clone ID:	None
IsoType:	IgG
Storage:	PBS with 0.02% sodium azide and 50% glycerol pH 7.3, -20°C for 12 months(Avoid repeated freeze / thaw cycles.)

Background

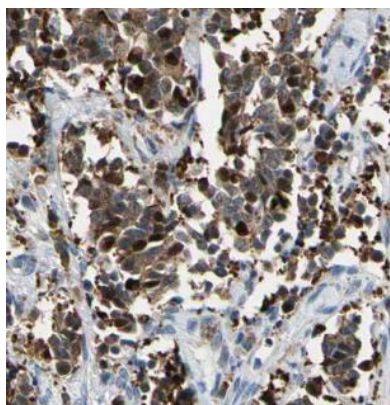
None

Immunogen information

Immunogen:	cofilin 1(non-muscle)
Synonyms:	Cofilin-1 18 kDa phosphoprotein (p18) Cofilin, non-muscle isoform CFL1 CFL
Observed MW:	18 kDa
Uniprot ID :	P23528

Application

Reactivity:	Human, Mouse, Rat
Tested Application:	ELISA, WB, IHC
Recommended dilution:	WB: 1:500 - 1:2000; IHC: 1:50 - 1:200; IF: 1:50 - 1:200
Image:	



Immunohistochemistry of paraffin-embedded human cervical cancer using FNab01825(CFL1 antibody) at dilution of 1:50



mouse brain tissue were subjected to SDS PAGE followed by western blot with FNab01825(CFL1 antibody) at dilution of 1:1000