

CNDP1 antibody

Product Information

| | |
|---------------|--|
| Catalog No.: | FNab01794 |
| Size: | 100µg |
| Form: | liquid |
| Purification: | Immunogen affinity purified |
| Purity: | ≥95% as determined by SDS-PAGE |
| Host: | Rabbit |
| Clonality: | polyclonal |
| Clone ID: | None |
| IsoType: | IgG |
| Storage: | PBS with 0.02% sodium azide and 50% glycerol pH 7.3, -20°C for 12 months(Avoid repeated freeze / thaw cycles.) |

Background

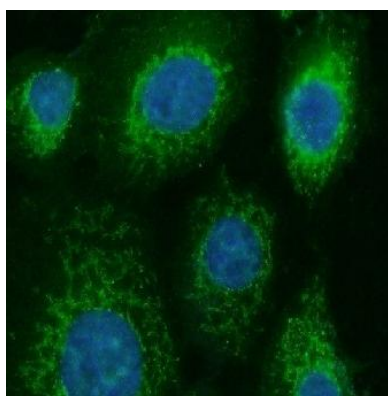
None

Immunogen information

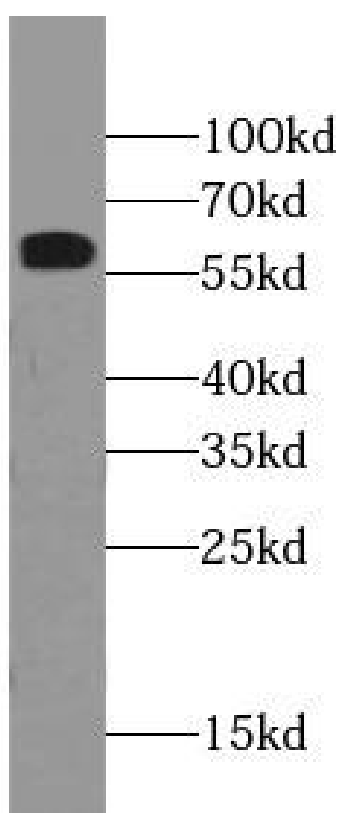
| | |
|--------------|---|
| Immunogen: | carnosine dipeptidase 1(metallopeptidase M20 family) |
| Synonyms: | Beta-Ala-His dipeptidase CNDP dipeptidase 1 Carnosine dipeptidase 1 Glutamate carboxypeptidase-like protein 2 Serum carnosinase CNDP1 CN1 CPGL2 |
| Observed MW: | 57 kDa |
| Uniprot ID : | Q96KN2 |

Application

| | |
|-----------------------|----------------------------------|
| Reactivity: | Human, Mouse, Rat |
| Tested Application: | ELISA, WB, IF |
| Recommended dilution: | WB: 1:500-1:1000; IF: 1:20-1:200 |
| Image: | |



Immunofluorescent analysis of A431 cells using FNab01794(CNDP1 Antibody) at dilution of 1:50 and Alexa Fluor 488-conjugated AffiniPure Goat Anti-Rabbit IgG(H+L)



HEK-293 cells were subjected to SDS PAGE followed by western blot with FNab01794(CNDP1 Antibody) at dilution of 1:600