

NCAPD2 antibody

Product Information

| | |
|---------------|--|
| Catalog No.: | FNab01792 |
| Size: | 100µg |
| Form: | liquid |
| Purification: | Immunogen affinity purified |
| Purity: | ≥95% as determined by SDS-PAGE |
| Host: | Rabbit |
| Clonality: | polyclonal |
| Clone ID: | None |
| IsoType: | IgG |
| Storage: | PBS with 0.02% sodium azide and 50% glycerol pH 7.3, -20°C for 12 months(Avoid repeated freeze / thaw cycles.) |

Background

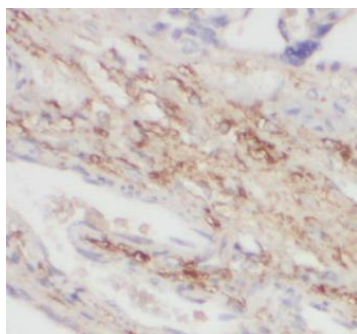
None

Immunogen information

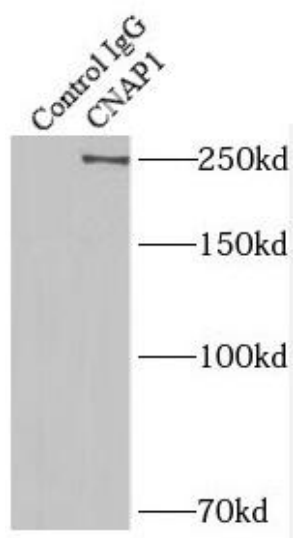
| | |
|--------------|--|
| Immunogen: | non-SMC condensin I complex, subunit D2 |
| Synonyms: | Condensin complex subunit 1 Chromosome condensation-related SMC-associated protein 1 Chromosome-associated protein D2 (hCAP-D2) Non-SMC condensin I complex subunit D2 XCAP-D2 homolog NCAPD2 CAPD2 CNAP1 KIAA0159 |
| Observed MW: | 250 kDa |
| Uniprot ID : | Q15021 |

Application

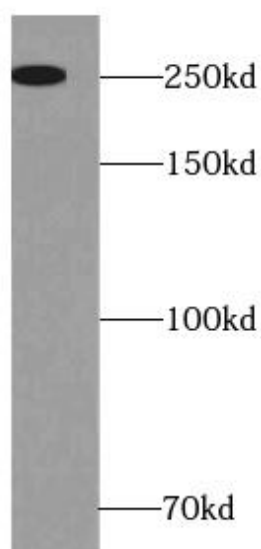
| | |
|-----------------------|---|
| Reactivity: | Human, Mouse, Rat |
| Tested Application: | ELISA, IF, WB, IP, IHC |
| Recommended dilution: | WB: 1:500-1:1000; IHC: 1:50-1:500; IF: 1:50-1:500; IP: 1:500-1:1000 |
| Image: | |



Immunohistochemistry of paraffin-embedded human placenta tissue slide using FNab01792(CEP250/CNAP1 antibody) at dilution of 1:200



IP Result of anti-CEP250/CNAP1 (IP:FNab01792, 5ug; Detection:FNab01792 1:500) with HeLa cells lysate 1200ug.



HeLa cells were subjected to SDS PAGE followed by western blot with FNab01792(CEP250/CNAP1 antibody) at dilution of 1:500