

CLU antibody

Product Information

Catalog No.:	FNab01782
Size:	100µg
Form:	liquid
Purification:	Protein A+G purification
Purity:	≥95% as determined by SDS-PAGE
Host:	Mouse
Clonality:	monoclonal
Clone ID:	5A5
IsoType:	IgG2a
Storage:	PBS with 0.02% sodium azide and 50% glycerol pH 7.3, -20°C for 12 months(Avoid repeated freeze / thaw cycles.)

Background

Clusterin (Apolipoprotein J) is a 75-80 kDa heterodimeric glycoprotein produced by a wide array of tissues and found in most biologic fluids (PMID: 7648419; 11906815). It is encoded by one single gene and cleaved posttranslationally into α (34-36 kDa) and β (36-39 kDa) subunits prior to secretion from the cell. Many functions have been described for clusterin, including regulating apoptosis, transporting lipids, controlling cell interactions, regulating complement (PMID: 10694874).

Immunogen information

Immunogen:	clusterin
Synonyms:	Clusterin Aging-associated gene 4 protein Apolipoprotein J (Apo-J) Complement cytolysis inhibitor (CLI) Complement-associated protein SP-40,40 Ku70-binding protein 1 NA1/NA2 Sulfated glycoprotein 2 (SGP-2) Testosterone-repressed prostate message 2 (TRPM-2) Clusterin beta chain Alternative names: ApoJalpha Complement cytolysis inhibitor a chain SP-40,40 beta-chain Clusterin alpha chain Alternative names: ApoJbeta Complement cytolysis inhibitor b chain SP-40,40 alpha-chain CLU APOJ CLI KUB1
Observed MW:	36 kDa
Uniprot ID :	P10909

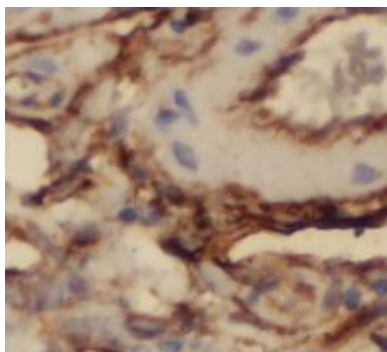
Application

Reactivity: Human

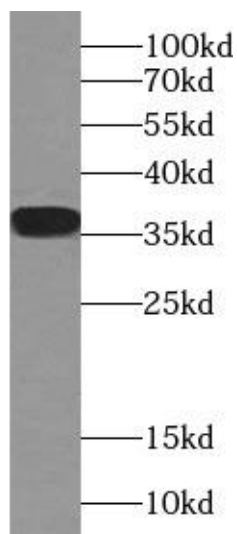
Tested Application: ELISA, WB, IHC

Recommended dilution: WB: 1:500-1:2000; IHC: 1:20-1:200

Image:



Immunohistochemistry of paraffin-embedded human liver slide using FNab01782(CLU Antibody) at dilution of 1:50



human blood tissue were subjected to SDS PAGE followed by western blot with FNab01782(CLU antibody) at dilution of 1:1000