

## anti- CLPP antibody

### Product Information

Catalog No.:	FNab01772
Size:	100µg
Form:	liquid
Purification:	Immunogen affinity purified
Purity:	≥95% as determined by SDS-PAGE
Host:	Rabbit
Clonality:	polyclonal
Clone ID:	None
IsoType:	IgG
Storage:	PBS with 0.02% sodium azide and 50% glycerol pH 7.3, -20°C for 12 months (Avoid repeated freeze / thaw cycles.)

### Background

Protease component of the Clp complex that cleaves peptides and various proteins in an ATP-dependent process. Has low peptidase activity in the absence of CLPX. The Clp complex can degrade CSN1S1, CSN2 and CSN3, as well as synthetic peptides(in vitro) and may be responsible for a fairly general and central housekeeping function rather than for the degradation of specific substrates.

### Immunogen information

Immunogen:	ClpP caseinolytic peptidase, ATP-dependent, proteolytic subunit homolog
Synonyms:	CLPP, Endopeptidase Clp
Observed MW:	26 kDa, 30 kDa
Uniprot ID :	Q16740

### Application

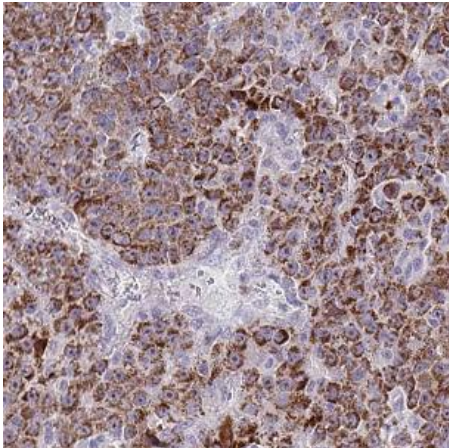
Reactivity:	Human, Mouse, Rat
Tested Application:	ELISA, WB, IHC, IF, IP

### Wuhan Fine Biotech Co., Ltd.

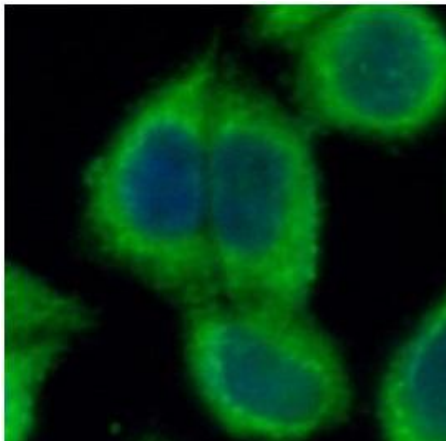
B9 Bld, High-Tech Medical Devices Park, No. 818 Gaoxin Ave. East Lake High-Tech Development Zone. Wuhan, Hubei, China(430206)

Recommended dilution: WB: 1:500-1:5000; IP: 1:500-1:1000; IHC: 1:100-1:400; IF: 1:10-1:100

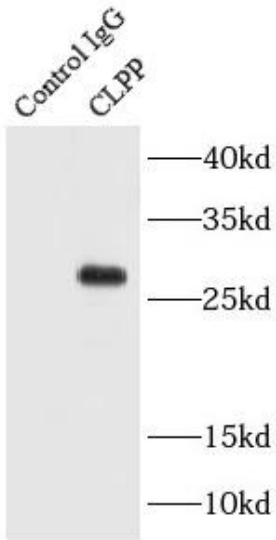
Image:



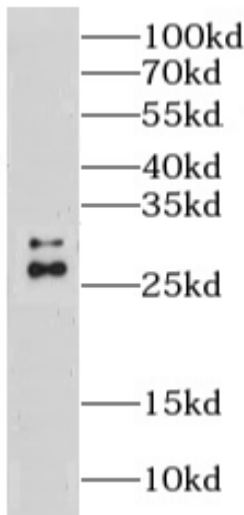
Immunohistochemistry of paraffin-embedded human liver cancer tissue slide using FNab01772 (CLPP Antibody) at dilution of 1:200 heat mediated antigen retrieved with Tris-EDTA buffer (pH9).



Immunofluorescent analysis of HeLa cells using CLPP antibody FNab01772 at 1:25 dilution



IP Result of anti-CLPP(IP: FNab01772, 3 $\mu$ g;  
Detection: FNab01772, 1:500) with mouse skeletal  
muscle tissue lysate 3000 $\mu$ g



K-562 cells were subjected to SDS PAGE  
followed by western blot with FNab01772(CLPP  
antibody) at dilution of 1:500