

## CLIC3 antibody

### Product Information

|               |  |
|---------------|--|
| Catalog No.:  | FNab01760  |
| Size:         | 100µg  |
| Form:         | liquid   |
| Purification: | Immunogen affinity purified  |
| Purity:       | ≥95% as determined by SDS-PAGE   |
| Host:         | Rabbit   |
| Clonality:    | polyclonal   |
| Clone ID:     | None   |
| IsoType:      | IgG  |
| Storage:      | PBS with 0.02% sodium azide and 50% glycerol pH 7.3, -20°C for 12 months(Avoid repeated freeze / thaw cycles.) |

### Background

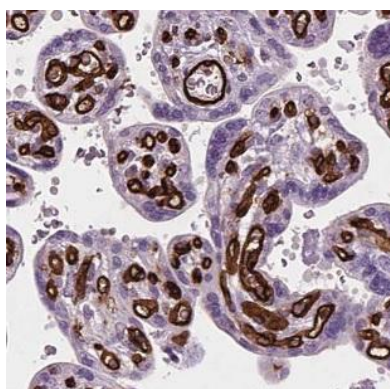
Can insert into membranes and form chloride ion channels. May participate in cellular growth control.

### Immunogen information

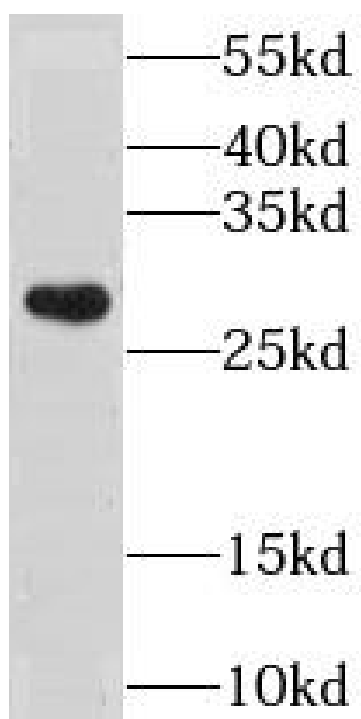
|              |  |
|--------------|--|
| Immunogen:   | chloride intracellular channel 3               |
| Synonyms:    | Chloride intracellular channel protein 3 CLIC3 |
| Observed MW: | 27-32 kDa                                      |
| Uniprot ID : | O95833   |

### Application

|                       |   |
|-----------------------|---|
| Reactivity:           | Human, Mouse, Rat                                 |
| Tested Application:   | ELISA, WB, IHC, IF                                |
| Recommended dilution: | WB: 1:500-1:2000; IHC: 1:20-1:200; IF: 1:20-1:200 |
| Image:                |   |



Immunohistochemistry of paraffin-embedded human placenta using FNab01760(CLIC3 antibody) at dilution of 1:50



HeLa cells were subjected to SDS PAGE followed by western blot with FNab01760(CLIC3 antibody) at dilution of 1:800