

CLEC11A antibody

Product Information

Catalog No.:	FNab01746
Size:	100µg
Form:	liquid
Purification:	Protein A+G purification
Purity:	≥95% as determined by SDS-PAGE
Host:	Mouse
Clonality:	monoclonal
Clone ID:	8C9
IsoType:	IgG2a
Storage:	PBS with 0.02% sodium azide and 50% glycerol pH 7.3, -20°C for 12 months(Avoid repeated freeze / thaw cycles.)

Background

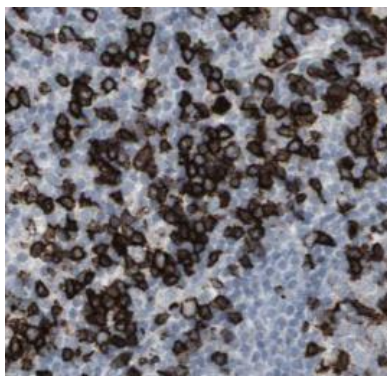
Stimulates the proliferation and differentiation of hematopoietic precursor cells from various lineages, including erythrocytes, lymphocytes, granulocytes and macrophages. Acts synergistically with other cytokines, including IL-3, GCSF, GMCSF and FLT3 ligand. Suppresses SCF-stimulated erythrocyte proliferation.

Immunogen information

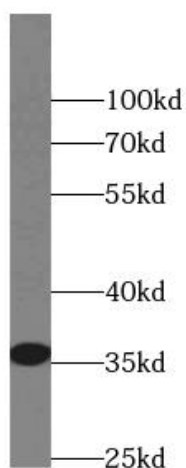
Immunogen:	C-type lectin domain family 11, member A
Synonyms:	C-type lectin domain family 11 member A C-type lectin superfamily member 3 Lymphocyte secreted C-type lectin Osteolectin Stem cell growth factor p47 CLEC11A CLECSF3 LSLCL SCGF
Observed MW:	36 kDa
Uniprot ID :	Q9Y240

Application

Reactivity:	Human
Tested Application:	ELISA, IHC, WB
Recommended dilution:	WB: 1:500-1:2000; IHC: 1:20-1:200
Image:	



Immunohistochemistry of paraffin-embedded human lymphoma tissue slide using FNab01746(CLEC11A Antibody) at dilution of 1:50



human heart tissue were subjected to SDS PAGE followed by western blot with FNab01746(CLEC11A Antibody) at dilution of 1:1000