

CLASP1 antibody

Product Information

| | |
|---------------|---|
| Catalog No.: | FNab01730 |
| Size: | 100µg |
| Form: | liquid |
| Purification: | Immunogen affinity purified |
| Purity: | ≥95% as determined by SDS-PAGE |
| Host: | Rabbit |
| Clonality: | polyclonal |
| Clone ID: | None |
| IsoType: | IgG |
| Storage: | PBS with 0.02% sodium azide and 50% glycerol pH 7.3, -20°C for 12 months (Avoid repeated freeze / thaw cycles.) |

Background

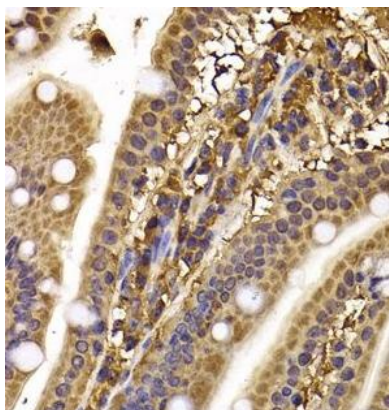
CLASPs, such as CLASP1, are nonmotor microtubule-associated proteins that interact with CLIPs (e.g., CLIP170; MIM 179838). CLASP1 is involved in the regulation of microtubule dynamics at the kinetochore and throughout the spindle (Maiato et al., 2003 [PubMed 12837247]).

Immunogen information

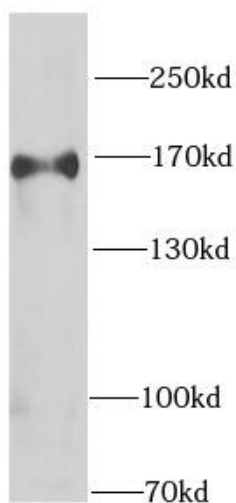
| | |
|--------------|--|
| Immunogen: | cytoplasmic linker associated protein 1 |
| Synonyms: | CLIP-associating protein 1 Cytoplasmic linker-associated protein 1 Multiple asters homolog 1 Protein Orbit homolog 1 (hOrbit1) CLASP1 KIAA0622 MAST1 |
| Observed MW: | 169 kDa |
| Uniprot ID : | Q7Z460 |

Application

| | |
|-----------------------|---|
| Reactivity: | Human, Mouse, Rat |
| Tested Application: | ELISA, IF, IHC, WB |
| Recommended dilution: | WB: 1:500 - 1:2000; IHC: 1:50 - 1:200; IF: 1:50 - 1:100 |
| Image: | |



Immunohistochemistry of paraffin-embedded mouse ileum using FNab01730(CLASP1 antibody) at dilution of 1:100



rat brain tissue were subjected to SDS PAGE followed by western blot with FNab01730(CLASP1 Antibody) at dilution of 1:1000