

KIT antibody

Product Information

Catalog No.:	FNab01726
Size:	100µg
Form:	liquid
Purification:	Immunogen affinity purified
Purity:	≥95% as determined by SDS-PAGE
Host:	Rabbit
Clonality:	polyclonal
Clone ID:	None
IsoType:	IgG
Storage:	PBS with 0.02% sodium azide and 50% glycerol pH 7.3, -20°C for 12 months(Avoid repeated freeze / thaw cycles.)

Background

Tyrosine-protein kinase that acts as cell-surface receptor for the cytokine KITLG/SCF and plays an essential role in the regulation of cell survival and proliferation, hematopoiesis, stem cell maintenance, gametogenesis, mast cell development, migration and function, and in melanogenesis. In response to KITLG/SCF binding, KIT can activate several signaling pathways. Phosphorylates PIK3R1, PLCG1, SH2B2/APS and CBL. Activates the AKT1 signaling pathway by phosphorylation of PIK3R1, the regulatory subunit of phosphatidylinositol 3-kinase. Activated KIT also transmits signals via GRB2 and activation of RAS, RAF1 and the MAP kinases MAPK1/ERK2 and/or MAPK3/ERK1. Promotes activation of STAT family members STAT1, STAT3, STAT5A and STAT5B. Activation of PLCG1 leads to the production of the cellular signaling molecules diacylglycerol and inositol 1,4,5-trisphosphate. KIT signaling is modulated by protein phosphatases, and by rapid internalization and degradation of the receptor. Activated KIT promotes phosphorylation of the protein phosphatases PTPN6/SHP-1 and PTPRU, and of the transcription factors STAT1, STAT3, STAT5A and STAT5B. Promotes phosphorylation of PIK3R1, CBL, CRK(isoform Crk-II), LYN, MAPK1/ERK2 and/or MAPK3/ERK1, PLCG1, SRC and SHC1.

Immunogen information

Immunogen:	Mast/stem cell growth factor receptor Kit
Synonyms:	Mast/stem cell growth factor receptor Kit (SCFR) Piebald trait protein (PBT) Proto-oncogene c-Kit Tyrosine-protein kinase Kit p145 c-kit v-kit Hardy-Zuckerman 4 feline sarcoma viral oncogene homolog KIT SCFR

Observed MW: 140 kDa
Uniprot ID : P10721

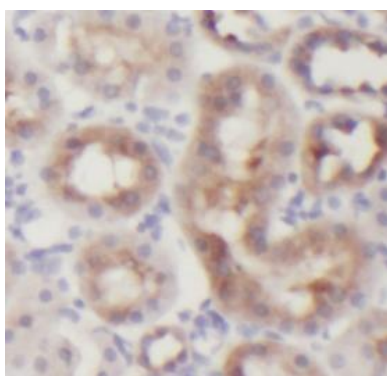
Application

Reactivity: Human

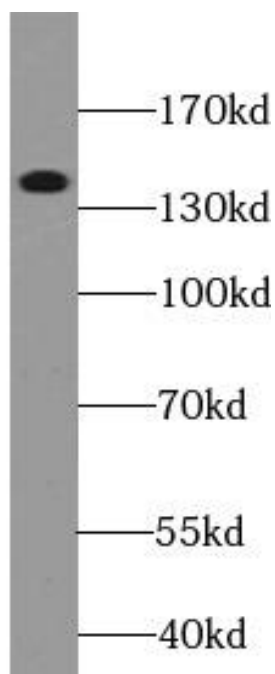
Tested Application: ELISA, WB, IHC, FC, IF

Recommended dilution: WB: 1:200-1:1000; IHC: 1:50-1:500; IF: 1:50-1:500

Image:



Immunohistochemistry of paraffin-embedded humankidney tissue slide using FNab01726(C-KIT Antibody) at dilution of 1:100



MCF7 cells were subjected to SDS PAGE followed by western blot with FNab01726(KIT antibody) at dilution of 1:500