

CISD2 antibody

Product Information

Catalog No.:	FNab01718
Size:	100μg
Form:	liquid
Purification:	Immunogen affinity purified
Purity:	≥95% as determined by SDS-PAGE
Host:	Rabbit
Clonality:	polyclonal
Clone ID:	None
IsoType:	IgG
Storage:	PBS with 0.02% sodium azide and 50% glycerol pH 7.3, -20°C for 12 months(Avoid repeated freeze / thaw cycles.)

Background

Regulator of autophagy that contributes to antagonize BECN1-mediated cellular autophagy at the endoplasmic reticulum. Participates in the interaction of BCL2 with BECN1 and is required for BCL2-mediated depression of endoplasmic reticulum Ca(2+) stores during autophagy. Contributes to BIK-initiated autophagy, while it is not involved in BIK-dependent activation of caspases. Involved in life span control, probably via its function as regulator of autophagy.

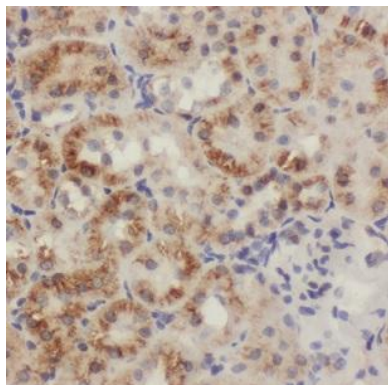
Immunogen information

Immunogen:	CDGSH iron sulfur domain 2
Synonyms:	CDGSH iron-sulfur domain-containing protein 2 Endoplasmic reticulum intermembrane small protein MitoNEET-related 1 protein (Miner1) Nutrient-deprivation autophagy factor-1 (NAF-1) CISD2 CDGSH2 ERIS ZCD2
Observed MW:	13-15 kDa
Uniprot ID :	Q8N5K1

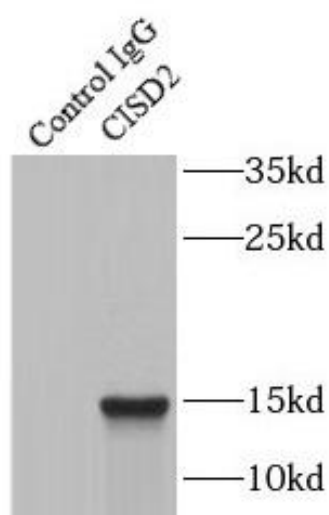
Application

Reactivity:	Human, Mouse, Rat
Tested Application:	ELISA, WB, IHC, IF, IP
Recommended dilution:	WB: 1:500-1:2000; IP: 1:200-1:1000; IHC: 1:20-1:200; IF: 1:20-1:200

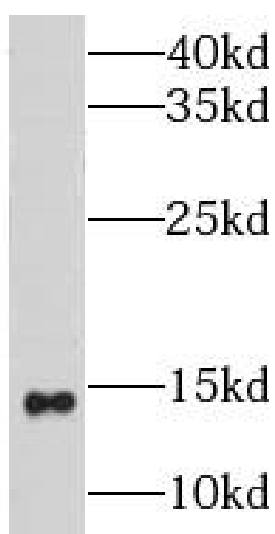
Image:



Immunohistochemistry of paraffin-embedded human kidney using FNab01718(CISD2 antibody) at dilution of 1:100



IP Result of anti-CISD2 (IP:FNab01718, 3ug; Detection:FNab01718 1:700) with mouse brain tissue lysate 4000ug.



mouse kidney tissue were subjected to SDS PAGE followed by western blot with FNab01718(CISD2 antibody) at dilution of 1:1000