

CHKA-Specific antibody

Product Information

Catalog No.:	FNab01666
Size:	100µg
Form:	liquid
Purification:	Immunogen affinity purified
Purity:	≥95% as determined by SDS-PAGE
Host:	Rabbit
Clonality:	polyclonal
Clone ID:	None
IsoType:	IgG
Storage:	PBS with 0.02% sodium azide and 50% glycerol pH 7.3, -20°C for 12 months(Avoid repeated freeze / thaw cycles.)

Background

CHKA(Choline kinase alpha) is also named as CHK, CKI, EK(Ethanolamine kinase) and belongs to the choline/ethanolamine kinase family. Choline kinase(ATP:choline phosphotransferase) is a cytosolic enzyme that catalyzes the committed step in the synthesis of PC by the CDP-choline pathway. The enzyme catalyzes the phosphorylation of choline with ATP to form phosphocholine and ADP(PMID:9506987). It has 2 isoforms produced by alternative splicing with the molecular weight of 52 kDa and 50 kDa.

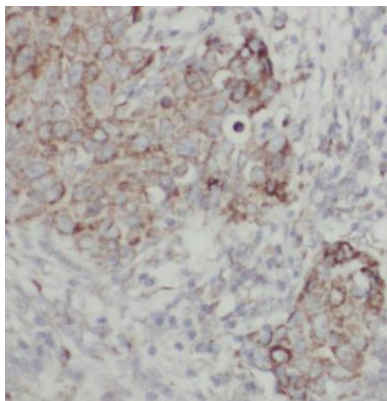
Immunogen information

Immunogen:	choline kinase alpha
Synonyms:	Choline kinase alpha (CK) CHETK-alpha Ethanolamine kinase (EK) CHKA CHK CKI
Observed MW:	50 kDa
Uniprot ID :	P35790

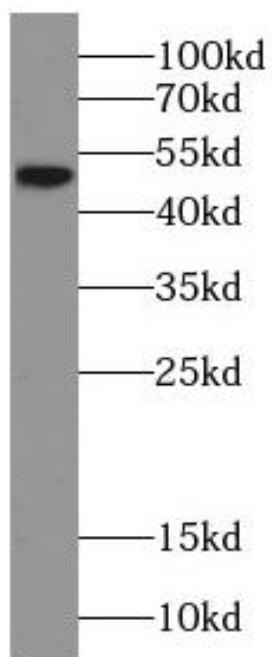
Application

Reactivity:	Human, Mouse, Rat
Tested Application:	ELISA, WB, IF, IHC
Recommended dilution:	WB: 1:200-1:2000; IF: 1:10-1:100; IHC: 1:20-1:200

Image:



Immunohistochemistry of paraffin-embedded human breast cancer tissue slide using FNab01666(CHKA antibody) at dilution of 1:50



COLO 320 cells were subjected to SDS PAGE followed by western blot with FNab01666(Choline kinase alpha-Specific antibody) at dilution of 1:300