

CHMP2A antibody

Product Information

Catalog No.:	FNab01658
Size:	100µg
Form:	liquid
Purification:	Immunogen affinity purified
Purity:	≥95% as determined by SDS-PAGE
Host:	Rabbit
Clonality:	polyclonal
Clone ID:	None
IsoType:	IgG
Storage:	PBS with 0.02% sodium azide and 50% glycerol pH 7.3, -20°C for 12 months(Avoid repeated freeze / thaw cycles.)

Background

Probable core component of the endosomal sorting required for transport complex III(ESCRT-III) which is involved in multivesicular bodies(MVBs) formation and sorting of endosomal cargo proteins into MVBs. MVBs contain intraluminal vesicles(ILVs) that are generated by invagination and scission from the limiting membrane of the endosome and mostly are delivered to lysosomes enabling degradation of membrane proteins, such as stimulated growth factor receptors, lysosomal enzymes and lipids. The MVB pathway appears to require the sequential function of ESCRT-O,-I,-II and-III complexes. ESCRT-III proteins mostly dissociate from the invaginating membrane before the ILV is released. The ESCRT machinery also functions in topologically equivalent membrane fission events, such as the terminal stages of cytokinesis(PubMed:21310966). Together with SPAST, the ESCRT-III complex promotes nuclear envelope sealing and mitotic spindle disassembly during late anaphase(PubMed:26040712). ESCRT-III proteins are believed to mediate the necessary vesicle extrusion and/or membrane fission activities, possibly in conjunction with the AAA ATPase VPS4. (Microbial infection) The ESCRT machinery functions in topologically equivalent membrane fission events, such as the budding of enveloped viruses(HIV-1 and other lentiviruses). Involved in HIV-1 p6-and p9-dependent virus release.

Immunogen information

Immunogen:	chromatin modifying protein 2A
Synonyms:	Charged multivesicular body protein 2a Chromatin-modifying protein 2a (CHMP2a) Putative breast adenocarcinoma marker BC-2 Vacuolar

protein sorting-associated protein 2-1 (Vps2-1, hVps2-1)|CHMP2A|BC2|CHMP2

Observed MW: 32 kDa

Uniprot ID : O43633

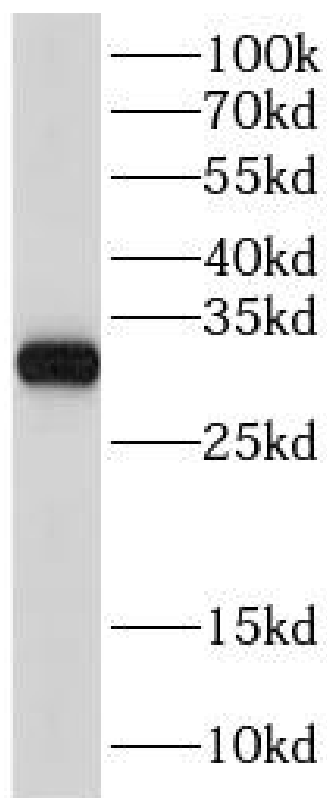
Application

Reactivity: Human, Mouse, Rat

Tested Application: ELISA, WB

Recommended dilution: WB: 1:500-1:2000

Image:



HepG2 cells were subjected to SDS PAGE followed by western blot with FNab01658(CHMP2A antibody) at dilution of 1:1000