

CHEK1 antibody

Product Information

Catalog No.:	FNab01652
Size:	100µg
Form:	liquid
Purification:	Immunogen affinity purified
Purity:	≥95% as determined by SDS-PAGE
Host:	Rabbit
Clonality:	polyclonal
Clone ID:	None
IsoType:	IgG
Storage:	PBS with 0.02% sodium azide and 50% glycerol pH 7.3, -20°C for 12 months (Avoid repeated freeze / thaw cycles.)

Background

The protein encoded by this gene belongs to the Ser/Thr protein kinase family. It is required for checkpoint mediated cell cycle arrest in response to DNA damage or the presence of unreplicated DNA. This protein acts to integrate signals from ATM and ATR, two cell cycle proteins involved in DNA damage responses, that also associate with chromatin in meiotic prophase I. Phosphorylation of CDC25A protein phosphatase by this protein is required for cells to delay cell cycle progression in response to double-strand DNA breaks. Several alternatively spliced transcript variants have been found for this gene.

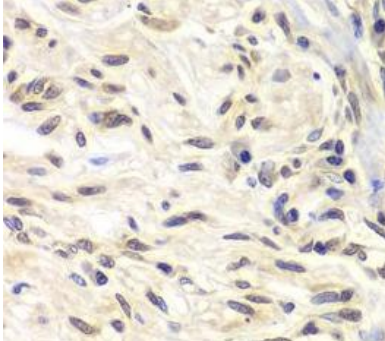
Immunogen information

Immunogen:	CHK1 checkpoint homolog (S. pombe)
Synonyms:	Serine/threonine-protein kinase Chk1 CHK1 checkpoint homolog Cell cycle checkpoint kinase Checkpoint kinase-1 CHEK1 CHK1
Observed MW:	54 kDa
Uniprot ID :	O14757

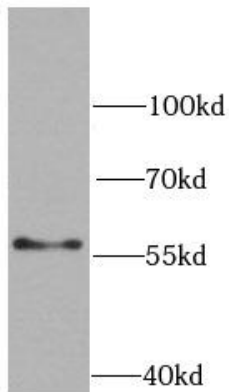
Application

Reactivity:	Human, Mouse, Rat
Tested Application:	ELISA, WB, IHC
Recommended dilution:	WB: 1:500 - 1:2000; IHC: 1:50 - 1:200

Image:



Immunohistochemistry of paraffin-embedded human gastric cancer using FNab01652(Chk1 antibody) at dilution of 1:100



SW620 cells were subjected to SDS PAGE followed by western blot with FNab01652(Chk1 antibody) at dilution of 1:1000