

CHI3L1 antibody

Product Information

Catalog No.:	FNab01649
Size:	100µg
Form:	liquid
Purification:	Immunogen affinity purified
Purity:	≥95% as determined by SDS-PAGE
Host:	Rabbit
Clonality:	polyclonal
Clone ID:	None
IsoType:	IgG
Storage:	PBS with 0.02% sodium azide and 50% glycerol pH 7.3, -20°C for 12 months(Avoid repeated freeze / thaw cycles.)

Background

Carbohydrate-binding lectin with a preference for chitin. Has no chitinase activity. May play a role in tissue remodeling and in the capacity of cells to respond to and cope with changes in their environment. Plays a role in T-helper cell type 2(Th2) inflammatory response and IL-13-induced inflammation, regulating allergen sensitization, inflammatory cell apoptosis, dendritic cell accumulation and M2 macrophage differentiation. Facilitates invasion of pathogenic enteric bacteria into colonic mucosa and lymphoid organs. Mediates activation of AKT1 signaling pathway and subsequent IL8 production in colonic epithelial cells. Regulates antibacterial responses in lung by contributing to macrophage bacterial killing, controlling bacterial dissemination and augmenting host tolerance. Also regulates hyperoxia-induced injury, inflammation and epithelial apoptosis in lung.

Immunogen information

Immunogen:	chitinase 3-like 1(cartilage glycoprotein-39)
Synonyms:	Chitinase-3-like protein 1 39 kDa synovial protein Cartilage glycoprotein 39 (CGP-39, GP-39, hCGP-39) YKL-40 CHI3L1
Observed MW:	43 kDa
Uniprot ID :	P36222

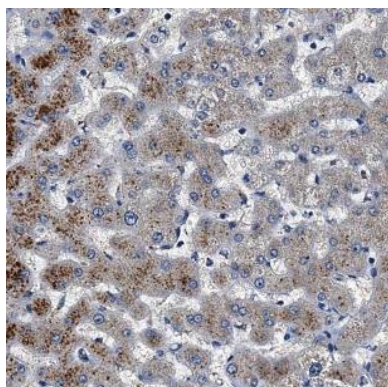
Application

Reactivity:	Human, Mouse, Rat
-------------	-------------------

Tested Application: ELISA, IHC

Recommended dilution: IHC: 1:50 - 1:200

Image:



Immunohistochemistry of paraffin-embedded human liver tissue using FNab01649(CHI3L1 antibody) at dilution of 1:100