

CHFR antibody

Product Information

Catalog No.:	FNab01648
Size:	100µg
Form:	liquid
Purification:	Immunogen affinity purified
Purity:	≥95% as determined by SDS-PAGE
Host:	Rabbit
Clonality:	polyclonal
Clone ID:	None
IsoType:	IgG
Storage:	PBS with 0.02% sodium azide and 50% glycerol pH 7.3, -20°C for 12 months(Avoid repeated freeze / thaw cycles.)

Background

E3 ubiquitin-protein ligase that functions in the antephasic checkpoint by actively delaying passage into mitosis in response to microtubule poisons. Acts in early prophase before chromosome condensation, when the centrosome move apart from each other along the periphery of the nucleus. Probably involved in signaling the presence of mitotic stress caused by microtubule poisons by mediating the 'Lys-48'-linked ubiquitination of target proteins, leading to their degradation by the proteasome. Promotes the ubiquitination and subsequent degradation of AURKA and PLK1. Probably acts as a tumor suppressor, possibly by mediating the polyubiquitination of HDAC1, leading to its degradation. May also promote the formation of 'Lys-63'-linked polyubiquitin chains and functions with the specific ubiquitin-conjugating UBC13-MMS2(UBE2N-UBE2V2) heterodimer. Substrates that are polyubiquitinated at 'Lys-63' are usually not targeted for degradation, but are rather involved in signaling cellular stress.

Immunogen information

Immunogen:	checkpoint with forkhead and ring finger domains
Synonyms:	E3 ubiquitin-protein ligase CHFR Checkpoint with forkhead and RING finger domains protein RING finger protein 196 RING-type E3 ubiquitin transferase CHFR CHFR RNF196
Observed MW:	70-85 kDa
Uniprot ID :	Q96EP1

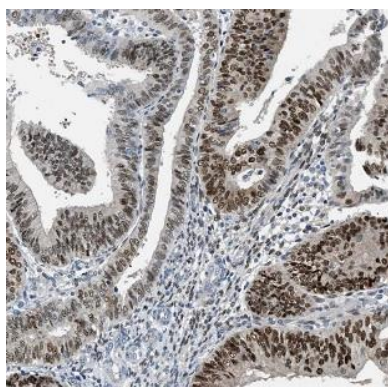
Application

Reactivity: Human, Mouse, Rat

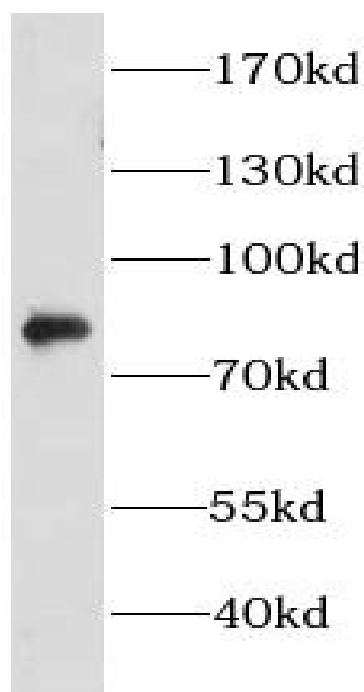
Tested Application: ELISA, WB, IHC

Recommended dilution: WB: 1:500-1:2000; IHC: 1:20-1:200

Image:



Immunohistochemistry of paraffin-embedded human endometrial cancer using FNab01648(CHFR antibody) at dilution of 1:100



HepG2 cells were subjected to SDS PAGE followed by western blot with FNab01648(CHFR antibody) at dilution of 1:1000