

CHERP antibody

Product Information

Catalog No.:	FNab01647
Size:	100µg
Form:	liquid
Purification:	Immunogen affinity purified
Purity:	≥95% as determined by SDS-PAGE
Host:	Rabbit
Clonality:	polyclonal
Clone ID:	None
IsoType:	IgG
Storage:	PBS with 0.02% sodium azide and 50% glycerol pH 7.3, -20°C for 12 months(Avoid repeated freeze / thaw cycles.)

Background

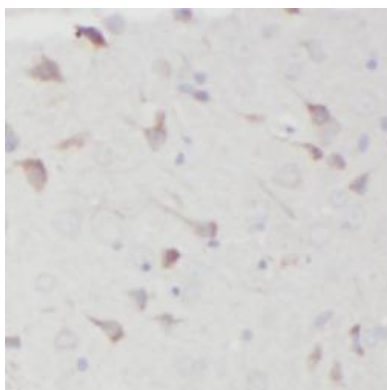
Involved in calcium homeostasis, growth and proliferation.

Immunogen information

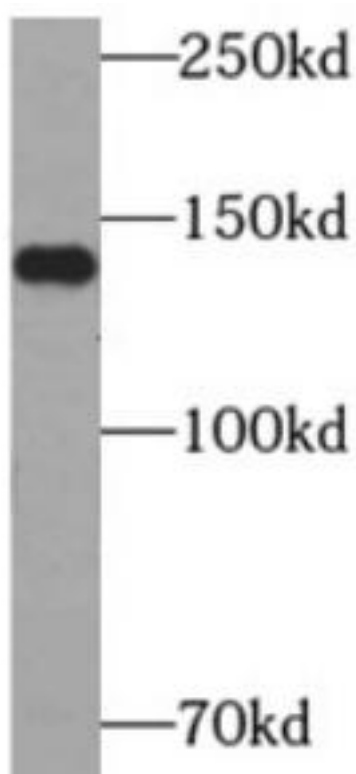
Immunogen:	calcium homeostasis endoplasmic reticulum protein
Synonyms:	Calcium homeostasis endoplasmic reticulum protein ERPROT 213-21 SR-related CTD-associated factor 6 CHERP DAN26 SCAF6
Observed MW:	130 kDa
Uniprot ID :	Q8IWX8

Application

Reactivity:	Human, Mouse
Tested Application:	ELISA, WB, IHC
Recommended dilution:	WB: 1:500-1:2000; IHC: 1:20-1:200
Image:	



Immunohistochemistry of paraffin-embedded mouse brain tissue slide using FNab01647(ChERP Antibody) at dilution of 1:50



Jurkat cells were subjected to SDS PAGE followed by western blot with FNab01647(ChERP Antibody) at dilution of 1:1000