

CETP antibody

Product Information

Catalog No.:	FNab01619
Size:	100µg
Form:	liquid
Purification:	Immunogen affinity purified
Purity:	≥95% as determined by SDS-PAGE
Host:	Rabbit
Clonality:	polyclonal
Clone ID:	None
IsoType:	IgG
Storage:	PBS with 0.02% sodium azide and 50% glycerol pH 7.3, -20°C for 12 months (Avoid repeated freeze / thaw cycles.)

Background

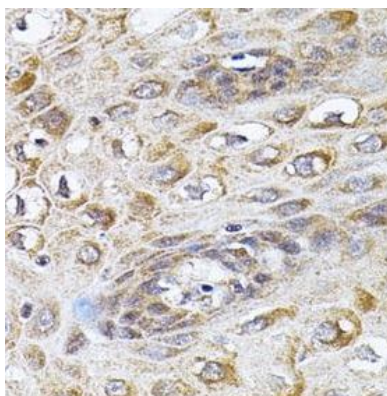
The protein encoded by this gene is found in plasma, where it is involved in the transfer of cholesteryl ester from high density lipoprotein (HDL) to other lipoproteins. Defects in this gene are a cause of hyperalphalipoproteinemia 1 (HALP1). Two transcript variants encoding different isoforms have been found for this gene.

Immunogen information

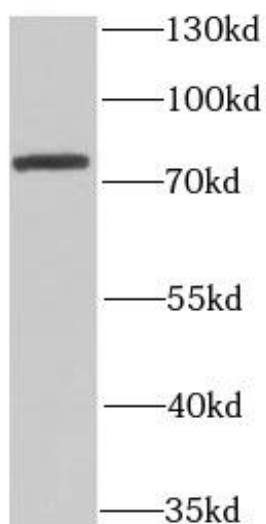
Immunogen:	cholesteryl ester transfer protein, plasma
Synonyms:	Cholesteryl ester transfer protein Lipid transfer protein I CETP
Observed MW:	75 kDa
Uniprot ID :	P11597

Application

Reactivity:	Human, Mouse, Rat
Tested Application:	ELISA, WB, IHC
Recommended dilution:	WB: 1:500 - 1:2000; IHC: 1:50 - 1:200
Image:	



Immunohistochemistry of paraffin-embedded human esophagus using FNa01619(CETP antibody) at dilution of 1:100



mouse liver tissue were subjected to SDS PAGE followed by western blot with FNa01619(CETP Antibody) at dilution of 1:1000