

CEPT1 antibody

Product Information

Catalog No.:	FNab01611
Size:	100µg
Form:	liquid
Purification:	Immunogen affinity purified
Purity:	≥95% as determined by SDS-PAGE
Host:	Rabbit
Clonality:	polyclonal
Clone ID:	None
IsoType:	IgG
Storage:	PBS with 0.02% sodium azide and 50% glycerol pH 7.3, -20°C for 12 months(Avoid repeated freeze / thaw cycles.)

Background

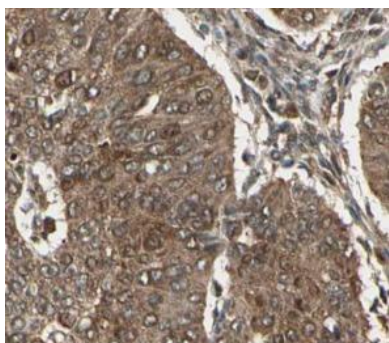
Catalyzes both phosphatidylcholine and phosphatidylethanolamine biosynthesis from CDP-choline and CDP-ethanolamine, respectively. Involved in protein-dependent process of phospholipid transport to distribute phosphatidyl choline to the luminal surface. Has a higher cholinephosphotransferase activity than ethanolaminephosphotransferase activity.

Immunogen information

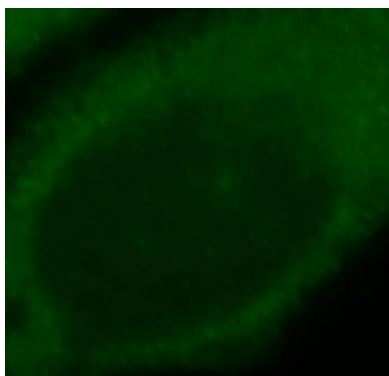
Immunogen:	choline/ethanolamine phosphotransferase 1
Synonyms:	Choline/ethanolaminephosphotransferase 1 (hCEPT1) 1-alkenyl-2-acylglycerol choline phosphotransferase CEPT1
Observed MW:	47 kDa
Uniprot ID :	Q9Y6K0

Application

Reactivity:	Human, Mouse, Rat
Tested Application:	ELISA, IHC, IF
Recommended dilution:	IHC: 1:20-1:200; IF: 1:10-1:100
Image:	



Immunohistochemical of paraffin-embedded human pancreas using FNab01611(CEPT1 antibody) at dilution of 1:50



Immunofluorescent analysis of HepG2 cells, using CEPT1 antibody FNab01611 at 1:25 dilution and FITC-goat anti-Rabbit IgG (green).