

CEP72 antibody

Product Information

Catalog No.:	FNab01609
Size:	100µg
Form:	liquid
Purification:	Immunogen affinity purified
Purity:	≥95% as determined by SDS-PAGE
Host:	Rabbit
Clonality:	polyclonal
Clone ID:	None
IsoType:	IgG
Storage:	PBS with 0.02% sodium azide and 50% glycerol pH 7.3, -20°C for 12 months(Avoid repeated freeze / thaw cycles.)

Background

Involved in the recruitment of key centrosomal proteins to the centrosome. Provides centrosomal microtubule-nucleation activity on the gamma-tubulin ring complexes(gamma-TuRCs) and has critical roles in forming a focused bipolar spindle, which is needed for proper tension generation between sister chromatids. Required for localization of KIZ, AKAP9 and gamma-tubulin ring complexes(gamma-TuRCs)(PubMed:19536135). Involved in centriole duplication. Required for CDK5RAP22, CEP152, WDR62 and CEP63 centrosomal localization and promotes the centrosomal localization of CDK2(PubMed:26297806).

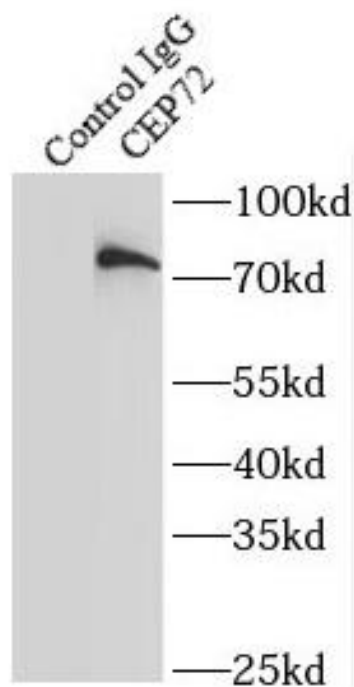
Immunogen information

Immunogen:	centrosomal protein 72kDa
Synonyms:	Centrosomal protein of 72 kDa (Cep72) CEP72 KIAA1519
Observed MW:	72 kDa
Uniprot ID :	Q9P209

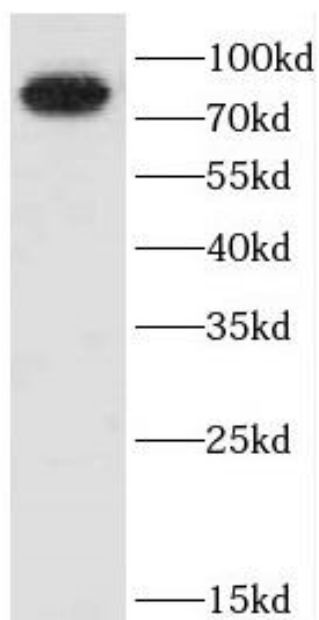
Application

Reactivity:	Human, Mouse
Tested Application:	ELISA, WB, IF, IP
Recommended dilution:	WB: 1:500-1:2000; IP: 1:200-1:1000; IF: 1:20-1:200

Image:



IP Result of anti-CEP72 (IP:FNab01609, 4ug;
Detection:FNab01609 1:1000) with HeLa cells
lysate 520ug.



HeLa cells were subjected to SDS PAGE followed
by western blot with FNab01609(CEP72 antibody)
at dilution of 1:1000