

## CEP350-Specific antibody

### Product Information

Catalog No.:	FNab01603
Size:	100µg
Form:	liquid
Purification:	Immunogen affinity purified
Purity:	≥95% as determined by SDS-PAGE
Host:	Rabbit
Clonality:	polyclonal
Clone ID:	None
IsoType:	IgG
Storage:	PBS with 0.02% sodium azide and 50% glycerol pH 7.3, -20°C for 12 months(Avoid repeated freeze / thaw cycles.)

### Background

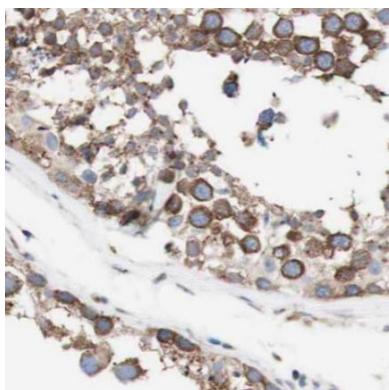
None

### Immunogen information

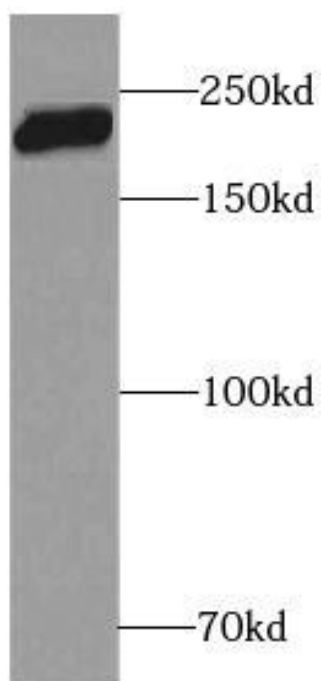
Immunogen:	centrosomal protein 350kDa
Synonyms:	Centrosome-associated protein 350 (Cep350) Centrosome-associated protein of 350 kDa CEP350 CAP350 KIAA0480
Observed MW:	200 kDa
Uniprot ID :	Q5VT06

### Application

Reactivity:	Human, Mouse, Rat
Tested Application:	ELISA, WB, IHC
Recommended dilution:	WB: 1:500-1:1000; IHC: 1:20-1:200
Image:	



Immunohistochemistry of paraffin-embedded human testis slide using FNab01603(CEP350 Specific Antibody) at dilution of 1:50



mouse heart tissue were subjected to SDS PAGE followed by western blot with FNab01603(CEP350-Specific antibody) at dilution of 1:600