

## CENPC antibody

### Product Information

Catalog No.:	FNab01584
Size:	100µg
Form:	liquid
Purification:	Immunogen affinity purified
Purity:	≥95% as determined by SDS-PAGE
Host:	Rabbit
Clonality:	polyclonal
Clone ID:	None
IsoType:	IgG
Storage:	PBS with 0.02% sodium azide and 50% glycerol pH 7.3, -20°C for 12 months (Avoid repeated freeze / thaw cycles.)

### Background

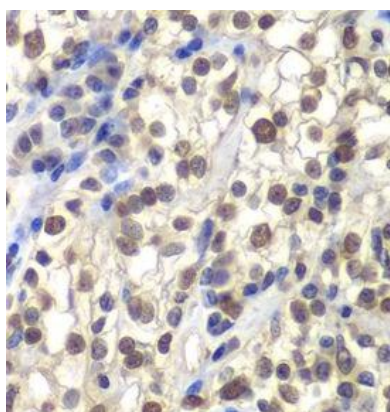
Centromere protein C 1 is a centromere autoantigen and a component of the inner kinetochore plate. The protein is required for maintaining proper kinetochore size and a timely transition to anaphase. A putative pseudogene exists on chromosome 12.

### Immunogen information

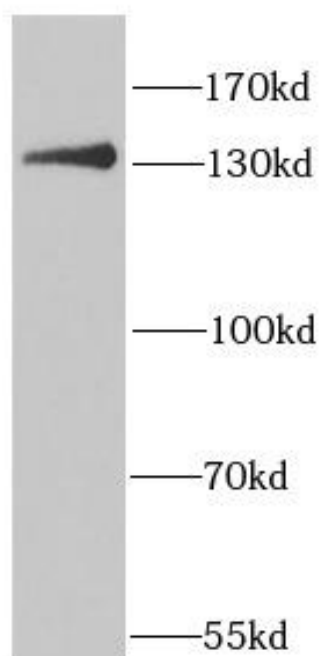
Immunogen:	centromere protein C 1
Synonyms:	Centromere protein C (CENP-C) Centromere autoantigen C Centromere protein C 1 (CENP-C 1) Interphase centromere complex protein 7 CENPC CENPC1 ICEN7
Observed MW:	130 kDa
Uniprot ID :	Q03188

### Application

Reactivity:	Human, Mouse, Rat
Tested Application:	ELISA, WB, IHC
Recommended dilution:	WB: 1:500 - 1:2000; IHC: 1:50 - 1:200
Image:	



Immunohistochemistry of paraffin-embedded human kidney cancer using FNab01584(CENPC antibody) at dilution of 1:100



HeLa cells were subjected to SDS PAGE followed by western blot with FNab01584(CENPC antibody) at dilution of 1:1000