

CDK6 antibody

Product Information

Catalog No.:	FNab01561
Size:	100µg
Form:	liquid
Purification:	Immunogen affinity purified
Purity:	≥95% as determined by SDS-PAGE
Host:	Rabbit
Clonality:	polyclonal
Clone ID:	None
IsoType:	IgG
Storage:	PBS with 0.02% sodium azide and 50% glycerol pH 7.3, -20°C for 12 months (Avoid repeated freeze / thaw cycles.)

Background

The protein encoded by this gene is a member of the cyclin-dependent protein kinase (CDK) family. CDK family members are highly similar to the gene products of *Saccharomyces cerevisiae cdc28*, and *Schizosaccharomyces pombe cdc2*, and are known to be important regulators of cell cycle progression. This kinase is a catalytic subunit of the protein kinase complex that is important for cell cycle G1 phase progression and G1/S transition. The activity of this kinase first appears in mid-G1 phase, which is controlled by the regulatory subunits including D-type cyclins and members of INK4 family of CDK inhibitors. This kinase, as well as CDK4, has been shown to phosphorylate, and thus regulate the activity of, tumor suppressor protein Rb. Expression of this gene is up-regulated in some types of cancer. Multiple alternatively spliced variants, encoding the same protein, have been identified.

Immunogen information

Immunogen:	cyclin-dependent kinase 6
Synonyms:	Cyclin-dependent kinase 6 Cell division protein kinase 6 Serine/threonine-protein kinase PLSTIRE CDK6 CDKN6
Observed MW:	37 kDa
Uniprot ID :	Q00534

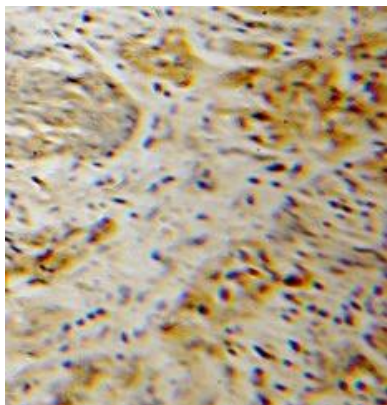
Application

Reactivity:	Human, Mouse, Rat
-------------	-------------------

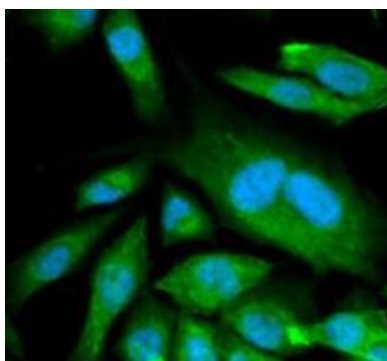
Tested Application: ELISA, WB, IHC, IF

Recommended dilution: WB: 1:500 - 1:2000; IHC: 1:50 - 1:200; IF: 1:50 - 1:200

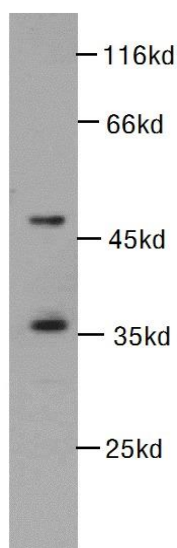
Image:



Immunohistochemistry of paraffin-embedded human endometrial cancer using FNab01561(CDK6 antibody) at dilution of 1:50



Immunofluorescence analysis of MCF-7 cells using FNab01561(CDK6 antibody). Blue: DAPI for nuclear staining.



Jurkat cells were subjected to SDS PAGE followed by western blot with FNab01561(CDK6 antibody) at dilution of 1:1000