

## CDK10 antibody

### Product Information

Catalog No.:	FNab01551
Size:	100µg
Form:	liquid
Purification:	Immunogen affinity purified
Purity:	≥95% as determined by SDS-PAGE
Host:	Rabbit
Clonality:	polyclonal
Clone ID:	None
IsoType:	IgG
Storage:	PBS with 0.02% sodium azide and 50% glycerol pH 7.3, -20°C for 12 months (Avoid repeated freeze / thaw cycles.)

### Background

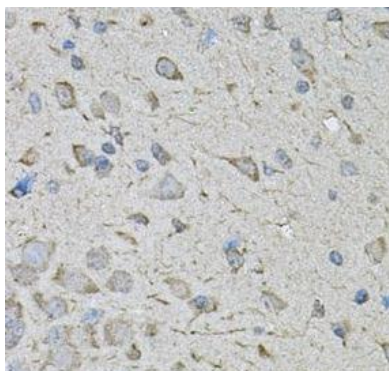
The protein encoded by this gene belongs to the CDK subfamily of the Ser/Thr protein kinase family. The CDK subfamily members are highly similar to the gene products of *S. cerevisiae* cdc28, and *S. pombe* cdc2, and are known to be essential for cell cycle progression. This kinase has been shown to play a role in cellular proliferation and its function is limited to cell cycle G2-M phase. Multiple transcript variants encoding different isoforms have been found for this gene.

### Immunogen information

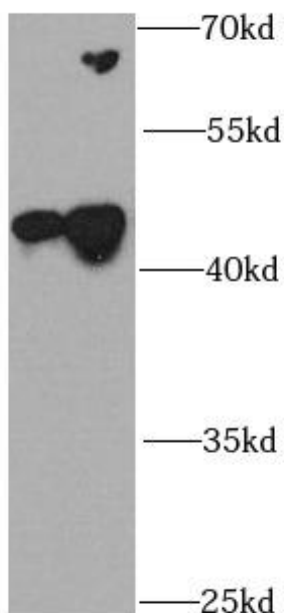
Immunogen:	cyclin-dependent kinase 10
Synonyms:	Cyclin-dependent kinase 10 Cell division protein kinase 10 Serine/threonine-protein kinase PISSLRE CDK10
Observed MW:	43 kDa
Uniprot ID :	Q15131

### Application

Reactivity:	Human, Mouse
Tested Application:	ELISA, WB, IHC
Recommended dilution:	WB: 1:500 - 1:2000; IHC: 1:50 - 1:200
Image:	



Immunohistochemical of paraffin-embedded mouse brain using FNa01551(CDK10 antibody) at dilution of 1:100



HEK-293 cells were subjected to SDS PAGE followed by western blot with FNa01551(CDK10 antibody) at dilution of 1:1000