

CDCP1 antibody

Product Information

Catalog No.:	FNab01545
Size:	100µg
Form:	liquid
Purification:	Immunogen affinity purified
Purity:	≥95% as determined by SDS-PAGE
Host:	Rabbit
Clonality:	polyclonal
Clone ID:	None
IsoType:	IgG
Storage:	PBS with 0.02% sodium azide and 50% glycerol pH 7.3, -20°C for 12 months(Avoid repeated freeze / thaw cycles.)

Background

May be involved in cell adhesion and cell matrix association. May play a role in the regulation of anchorage versus migration or proliferation versus differentiation via its phosphorylation. May be a novel marker for leukemia diagnosis and for immature hematopoietic stem cell subsets. Belongs to the tetraspanin web involved in tumor progression and metastasis.

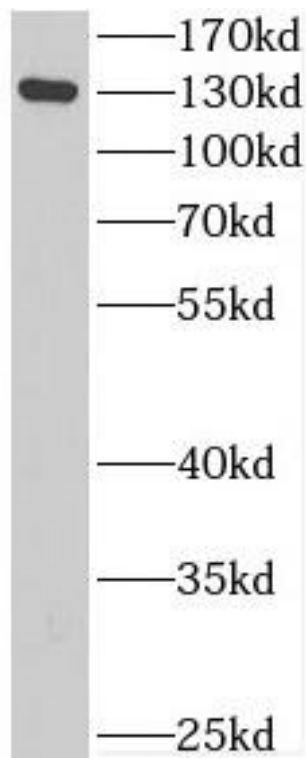
Immunogen information

Immunogen:	CUB domain containing protein 1
Synonyms:	CUB domain-containing protein 1 Membrane glycoprotein gp140 Subtractive immunization M plus HEp3-associated 135 kDa protein (SIMA135) Transmembrane and associated with src kinases CDCP1 TRASK
Observed MW:	130 kDa
Uniprot ID :	Q9H5V8

Application

Reactivity:	Human, Mouse, Rat
Tested Application:	ELISA, WB
Recommended dilution:WB:	1:500-1:2000

Image:



A549 cells were subjected to SDS PAGE followed by western blot with FNab01545(CDCP1 Antibody) at dilution of 1:600