

## CDCA3 antibody

### Product Information

Catalog No.:	FNab01540
Size:	100µg
Form:	liquid
Purification:	Immunogen affinity purified
Purity:	≥95% as determined by SDS-PAGE
Host:	Rabbit
Clonality:	polyclonal
Clone ID:	None
IsoType:	IgG
Storage:	PBS with 0.02% sodium azide and 50% glycerol pH 7.3, -20°C for 12 months(Avoid repeated freeze / thaw cycles.)

### Background

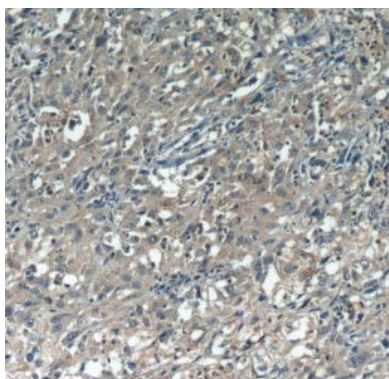
F-box-like protein which is required for entry into mitosis. Acts by participating in E3 ligase complexes that mediate the ubiquitination and degradation of WEE1 kinase at G2/M phase(By similarity).

### Immunogen information

Immunogen:	cell division cycle associated 3
Synonyms:	Cell division cycle-associated protein 3 Gene-rich cluster protein C8 Trigger of mitotic entry protein 1 (TOME-1) CDCA3 C8 GRCC8 TOME1
Observed MW:	None
Uniprot ID :	Q99618

### Application

Reactivity:	Human
Tested Application:	ELISA, WB, IHC
Recommended dilution:	WB: 1:500-1:2000; IHC: 1:20-1:200
Image:	



Immunohistochemistry of paraffin-embedded human cervical cancer tissue slide using FNab01540(CDCA3 Antibody) at dilution of 1:50