

CDC5L antibody

Product Information

Catalog No.:	FNab01535
Size:	100µg
Form:	liquid
Purification:	Immunogen affinity purified
Purity:	≥95% as determined by SDS-PAGE
Host:	Rabbit
Clonality:	polyclonal
Clone ID:	None
IsoType:	IgG
Storage:	PBS with 0.02% sodium azide and 50% glycerol pH 7.3, -20°C for 12 months (Avoid repeated freeze / thaw cycles.)

Background

The protein encoded by this gene shares a significant similarity with *Schizosaccharomyces pombe* cdc5 gene product, which is a cell cycle regulator important for G2/M transition. This protein has been demonstrated to act as a positive regulator of cell cycle G2/M progression. It was also found to be an essential component of a non-snRNA spliceosome, which contains at least five additional protein factors and is required for the second catalytic step of pre-mRNA splicing.

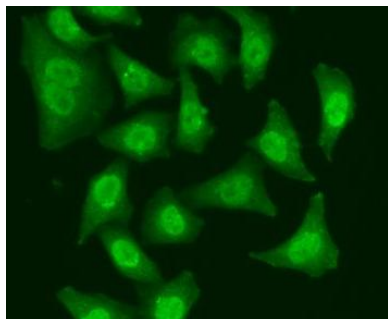
Immunogen information

Immunogen:	CDC5 cell division cycle 5-like (S. pombe)
Synonyms:	Cell division cycle 5-like protein (Cdc5-like protein) Pombe cdc5-related protein CDC5L KIAA0432 PCDC5RP
Observed MW:	107 kDa
Uniprot ID :	Q99459

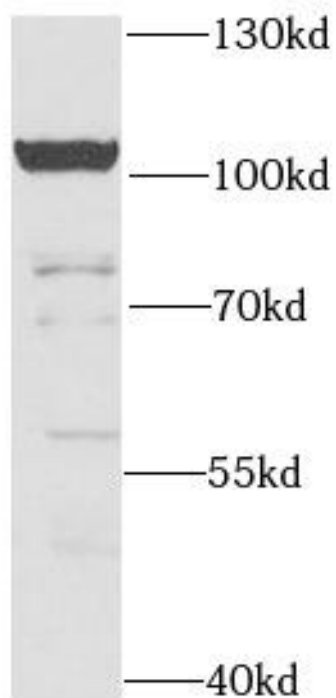
Application

Reactivity:	Human, Mouse
Tested Application:	ELISA, WB, IHC, IF
Recommended dilution:	WB: 1:500 - 1:2000; IHC: 1:50 - 1:200; IF: 1:10 - 1:100

Image:



Immunofluorescence analysis of A549 cells using FNab01535(CDC5L antibody) at dilution of 1:50



MCF7 cells were subjected to SDS PAGE followed by western blot with FNab01535(CDC5L antibody) at dilution of 1:1000